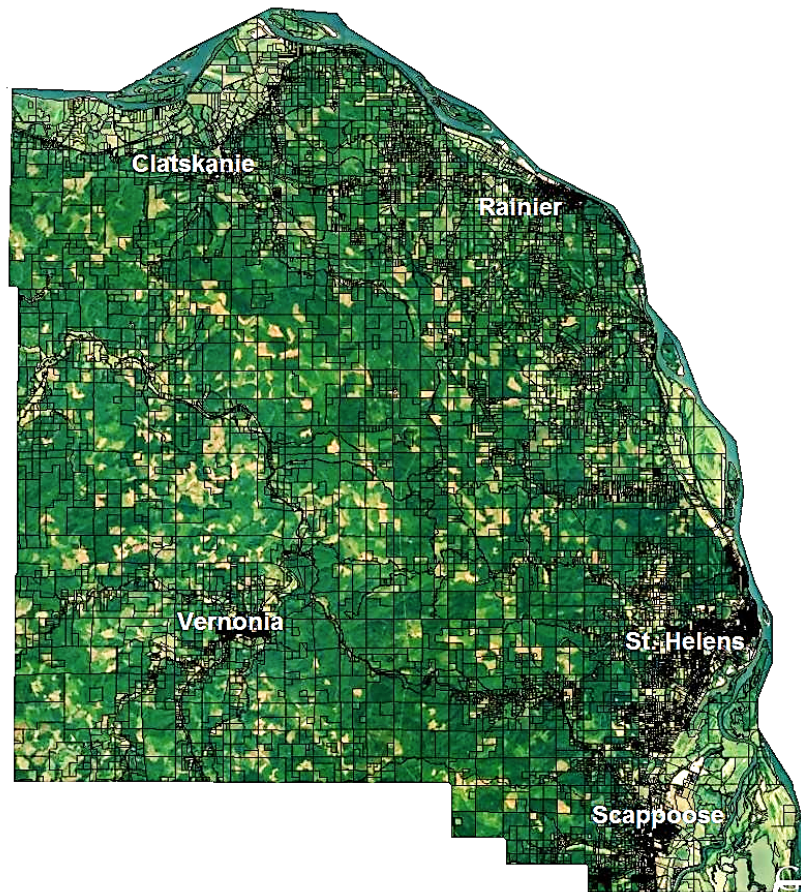


Columbia County, Oregon



Summary of Assessment and Tax Roll

2016-17

Visit our Website at www.co.columbia.or.us

Index

Page

Where Your Property Tax Dollar Goes 2

Taxing Districts and Rates By Tax Code

Tax Code	Page	Tax Code	Page	Tax Code	Page	Tax Code	Page
0101.....	3	0216.....	11	0323	20	0590	28
0102.....	3	0217.....	12	0324	20	0591	29
0103.....	3	0218.....	12	0325	21	0598	29
0104.....	4	0219.....	12	0326	21	9101	30
0105.....	4	0220.....	13	0328	21	9108	30
0106.....	4	0301.....	13	0329	22	9109	30
0108.....	5	0302.....	13	0330	22	9110	31
0109.....	5	0303.....	14	0391	22	9111	31
0110.....	5	0304.....	14	0395	23	9201	31
0111.....	6	0305.....	14	0399	23	9203	32
0114.....	6	0306.....	15	0401	23	9208	32
0201.....	6	0308.....	15	0402	24	9209	32
0202.....	7	0309.....	16	0403	24	9211	33
0203.....	7	0310.....	16	0404	24	9212	33
0204.....	7	0311.....	16	0405	25	9213	33
0205.....	8	0312.....	17	0501	25	9301	34
0206.....	8	0313.....	17	0502	25	9302	34
0207.....	8	0315.....	17	0503	26	9305	34
0208.....	9	0316.....	18	0504	26	9306	35
0209.....	9	0317.....	18	0505	26	9308	35
0210.....	10	0318.....	18	0506	27	9309	35
0211.....	10	0319.....	19	0508	27	9312	36
0212.....	10	0320.....	19	0509	27	9508	36
0213.....	11	0321.....	19	0510	28	9510	36
0215.....	11	0322.....	20	0511	28		

Explanation of Urban Renewal Tax Increment Financing 37

2016 Columbia County Urban Renewal Increments and Adjusted Tax Rates 38

Measure 5 Compression 39

Changed Property Ratios..... 40

Historical Comparison of County Valuation and Total Taxes 41

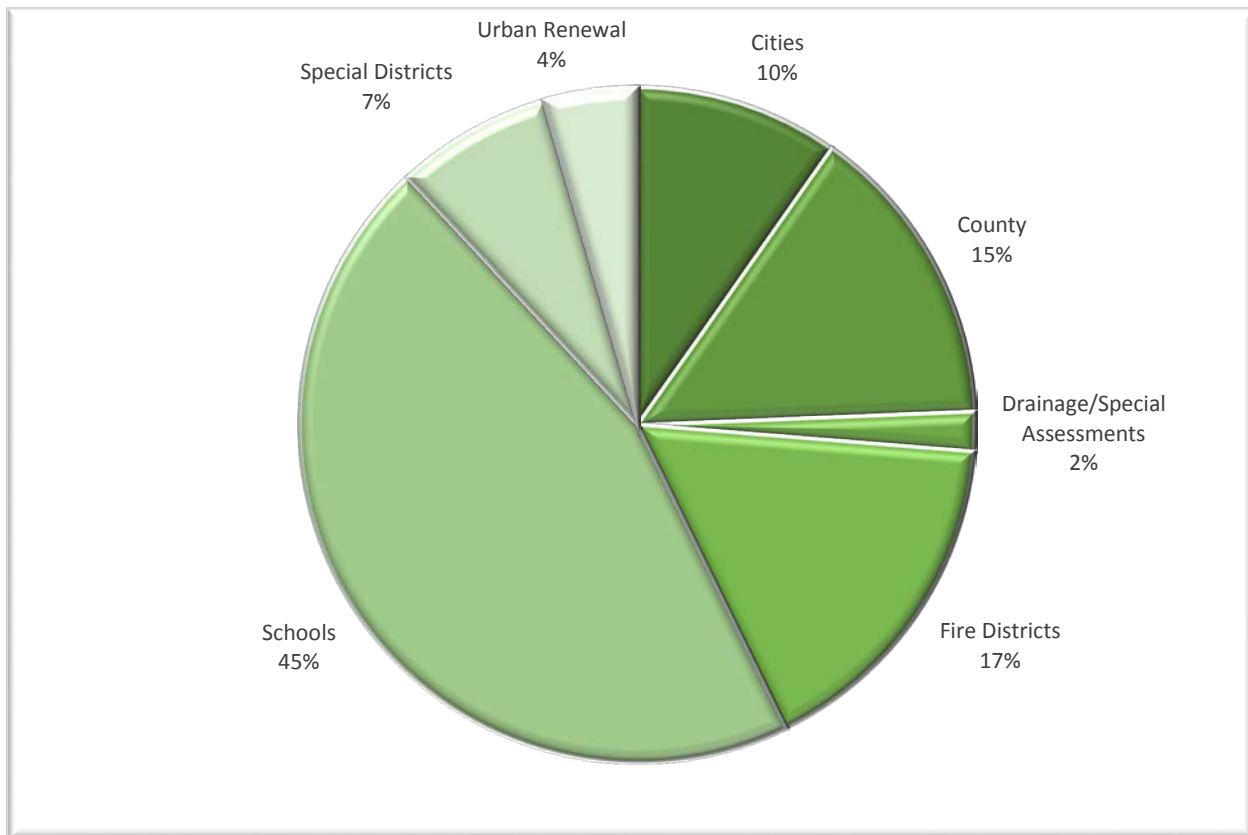
2016 Top 20 All Roll Type Taxpayers for Columbia County 41

Columbia County 2016 Tax District Total Values 42

Columbia County 2016-17 District Tax Rates and Total Taxes..... 43

Columbia County Assessor’s Office Contact Information 44

Where Your Property Tax Dollar Goes 2015-16 Fiscal Year



Cities	\$ 6,851,174
County	\$ 10,276,520
Drainage/Special Assessments	\$ 1,330,394
Fire Districts	\$ 11,586,888
Schools	\$ 31,852,501
Special Districts	\$ 5,235,532
Urban Renewal	\$ 3,139,820
TOTAL	\$ 70,272,829

CODE 0101					
ID	NAME	TOTAL	EDUCATION	GOVERNMENT	NON-LIMITED
001	COLUMBIA COUNTY	1.5389		1.3161	0.2228
002	JAIL OPERATIONS - 3 YEAR LEVY	0.5797		0.5797	
010	COLUMBIA 4H & EXTENSION	0.0539		0.0539	
015	COL 9-1-1 COMM DISTR	0.2409		0.2409	
016	COL 911 LO LEVY	0.2900		0.2900	
020	COLUMBIA VECTOR	0.1195		0.1195	
060	PORT OF ST HELENS	0.0828		0.0828	
100	SCAPPOOSE LIBRARY	0.2536		0.2536	
111	COLUMBIA SWCD	0.0943		0.0943	
170	SCAPPOOSE CITY	3.3025		3.2268	0.0757
270	SCAPPOOSE JT RFPD	2.0545		2.0545	
300	NW REGIONAL ESD	0.1451	0.1451		
330	SCAPPOOSE 1 JT SCHOOL	6.9002	4.9725		1.9277
390	PORTLAND COMM COLLEGE	0.2828	0.2828		
391	PORTLAND COMM COLLEGE	0.3957			0.3957
802	CCDA - COLCO DEV AGENCY	0.1392		0.1392	
		16.4736	5.4004	8.4513	2.6219

CODE 0102					
ID	NAME	TOTAL	EDUCATION	GOVERNMENT	NON-LIMITED
001	COLUMBIA COUNTY	1.5389		1.3161	0.2228
002	JAIL OPERATIONS - 3 YEAR LEVY	0.5797		0.5797	
010	COLUMBIA 4H & EXTENSION	0.0539		0.0539	
015	COL 9-1-1 COMM DISTR	0.2409		0.2409	
016	COL 911 LO LEVY	0.2900		0.2900	
020	COLUMBIA VECTOR	0.1195		0.1195	
060	PORT OF ST HELENS	0.0828		0.0828	
112	WEST MULTNOMAH SWCD	0.0750		0.0750	
260	SAUVIE ISLAND RFPD # 30	0.7894		0.7894	
261	SAUVIE ISLAND RFPD # 30 LOCAL OPTION	0.3500		0.3500	
300	NW REGIONAL ESD	0.1451	0.1451		
330	SCAPPOOSE 1 JT SCHOOL	6.9002	4.9725		1.9277
390	PORTLAND COMM COLLEGE	0.2828	0.2828		
391	PORTLAND COMM COLLEGE	0.3957			0.3957
802	CCDA - COLCO DEV AGENCY	0.1335		0.1335	
		11.9774	5.4004	4.0308	2.5462

CODE 0103					
ID	NAME	TOTAL	EDUCATION	GOVERNMENT	NON-LIMITED
001	COLUMBIA COUNTY	1.5389		1.3161	0.2228
002	JAIL OPERATIONS - 3 YEAR LEVY	0.5797		0.5797	
010	COLUMBIA 4H & EXTENSION	0.0539		0.0539	
015	COL 9-1-1 COMM DISTR	0.2409		0.2409	
016	COL 911 LO LEVY	0.2900		0.2900	
111	COLUMBIA SWCD	0.0943		0.0943	
300	NW REGIONAL ESD	0.1451	0.1451		
330	SCAPPOOSE 1 JT SCHOOL	6.9002	4.9725		1.9277
390	PORTLAND COMM COLLEGE	0.2828	0.2828		
391	PORTLAND COMM COLLEGE	0.3957			0.3957
802	CCDA - COLCO DEV AGENCY	0.1250		0.1250	
		10.6465	5.4004	2.6999	2.5462

2016-17 Tax Rates by Code Area

CODE 0104					
ID	NAME	TOTAL	EDUCATION	GOVERNMENT	NON-LIMITED
001	COLUMBIA COUNTY	1.5389		1.3161	0.2228
002	JAIL OPERATIONS - 3 YEAR LEVY	0.5797		0.5797	
010	COLUMBIA 4H & EXTENSION	0.0539		0.0539	
015	COL 9-1-1 COMM DISTR	0.2409		0.2409	
016	COL 911 LO LEVY	0.2900		0.2900	
100	SCAPPOOSE LIBRARY	0.2536		0.2536	
111	COLUMBIA SWCD	0.0943		0.0943	
270	SCAPPOOSE JT RFPD	2.0545		2.0545	
300	NW REGIONAL ESD	0.1451	0.1451		
330	SCAPPOOSE 1 JT SCHOOL	6.9002	4.9725		1.9277
390	PORTLAND COMM COLLEGE	0.2828	0.2828		
391	PORTLAND COMM COLLEGE	0.3957			0.3957
802	CCDA - COLCO DEV AGENCY	0.1250		0.1250	
		12.9546	5.4004	5.0080	2.5462

CODE 0105					
ID	NAME	TOTAL	EDUCATION	GOVERNMENT	NON-LIMITED
001	COLUMBIA COUNTY	1.5389		1.3161	0.2228
002	JAIL OPERATIONS - 3 YEAR LEVY	0.5797		0.5797	
010	COLUMBIA 4H & EXTENSION	0.0539		0.0539	
015	COL 9-1-1 COMM DISTR	0.2409		0.2409	
016	COL 911 LO LEVY	0.2900		0.2900	
020	COLUMBIA VECTOR	0.1195		0.1195	
060	PORT OF ST HELENS	0.0828		0.0828	
111	COLUMBIA SWCD	0.0943		0.0943	
300	NW REGIONAL ESD	0.1451	0.1451		
330	SCAPPOOSE 1 JT SCHOOL	6.9002	4.9725		1.9277
390	PORTLAND COMM COLLEGE	0.2828	0.2828		
391	PORTLAND COMM COLLEGE	0.3957			0.3957
802	CCDA - COLCO DEV AGENCY	0.1392		0.1392	
		10.8630	5.4004	2.9164	2.5462

CODE 0106					
ID	NAME	TOTAL	EDUCATION	GOVERNMENT	NON-LIMITED
001	COLUMBIA COUNTY	1.5389		1.3161	0.2228
002	JAIL OPERATIONS - 3 YEAR LEVY	0.5797		0.5797	
010	COLUMBIA 4H & EXTENSION	0.0539		0.0539	
015	COL 9-1-1 COMM DISTR	0.2409		0.2409	
016	COL 911 LO LEVY	0.2900		0.2900	
100	SCAPPOOSE LIBRARY	0.2536		0.2536	
111	COLUMBIA SWCD	0.0943		0.0943	
270	SCAPPOOSE JT RFPD	2.0545		2.0545	
300	NW REGIONAL ESD	0.1451	0.1451		
330	SCAPPOOSE 1 JT SCHOOL	6.9002	4.9725		1.9277
390	PORTLAND COMM COLLEGE	0.2828	0.2828		
391	PORTLAND COMM COLLEGE	0.3957			0.3957
802	CCDA - COLCO DEV AGENCY	0.1250		0.1250	
		12.9546	5.4004	5.0080	2.5462

CODE 0108

ID	NAME	TOTAL	EDUCATION	GOVERNMENT	NON-LIMITED
001	COLUMBIA COUNTY	1.5389		1.3161	0.2228
002	JAIL OPERATIONS - 3 YEAR LEVY	0.5797		0.5797	
010	COLUMBIA 4H & EXTENSION	0.0539		0.0539	
015	COL 9-1-1 COMM DISTR	0.2409		0.2409	
016	COL 911 LO LEVY	0.2900		0.2900	
020	COLUMBIA VECTOR	0.1195		0.1195	
060	PORT OF ST HELENS	0.0828		0.0828	
100	SCAPPOOSE LIBRARY	0.2536		0.2536	
111	COLUMBIA SWCD	0.0943		0.0943	
270	SCAPPOOSE JT RFPD	2.0545		2.0545	
300	NW REGIONAL ESD	0.1451	0.1451		
330	SCAPPOOSE 1 JT SCHOOL	6.9002	4.9725		1.9277
390	PORTLAND COMM COLLEGE	0.2828	0.2828		
391	PORTLAND COMM COLLEGE	0.3957			0.3957
802	CCDA - COLCO DEV AGENCY	0.1392		0.1392	
		13.1711	5.4004	5.2245	2.5462

CODE 0109

ID	NAME	TOTAL	EDUCATION	GOVERNMENT	NON-LIMITED
001	COLUMBIA COUNTY	1.5389		1.3161	0.2228
002	JAIL OPERATIONS - 3 YEAR LEVY	0.5797		0.5797	
010	COLUMBIA 4H & EXTENSION	0.0539		0.0539	
015	COL 9-1-1 COMM DISTR	0.2409		0.2409	
016	COL 911 LO LEVY	0.2900		0.2900	
020	COLUMBIA VECTOR	0.1195		0.1195	
060	PORT OF ST HELENS	0.0828		0.0828	
100	SCAPPOOSE LIBRARY	0.2536		0.2536	
111	COLUMBIA SWCD	0.0943		0.0943	
270	SCAPPOOSE JT RFPD	2.0545		2.0545	
300	NW REGIONAL ESD	0.1451	0.1451		
330	SCAPPOOSE 1 JT SCHOOL	6.9002	4.9725		1.9277
390	PORTLAND COMM COLLEGE	0.2828	0.2828		
391	PORTLAND COMM COLLEGE	0.3957			0.3957
802	CCDA - COLCO DEV AGENCY	0.1392		0.1392	
		13.1711	5.4004	5.2245	2.5462

CODE 0110

ID	NAME	TOTAL	EDUCATION	GOVERNMENT	NON-LIMITED
001	COLUMBIA COUNTY	1.5389		1.3161	0.2228
002	JAIL OPERATIONS - 3 YEAR LEVY	0.5797		0.5797	
010	COLUMBIA 4H & EXTENSION	0.0539		0.0539	
015	COL 9-1-1 COMM DISTR	0.2409		0.2409	
016	COL 911 LO LEVY	0.2900		0.2900	
020	COLUMBIA VECTOR	0.1195		0.1195	
060	PORT OF ST HELENS	0.0828		0.0828	
111	COLUMBIA SWCD	0.0943		0.0943	
275	COLUMBIA RIVER FIRE	2.9731		2.9731	
300	NW REGIONAL ESD	0.1451	0.1451		
330	SCAPPOOSE 1 JT SCHOOL	6.9002	4.9725		1.9277
390	PORTLAND COMM COLLEGE	0.2828	0.2828		
391	PORTLAND COMM COLLEGE	0.3957			0.3957
802	CCDA - COLCO DEV AGENCY	0.1392		0.1392	
		13.8361	5.4004	5.8895	2.5462

2016-17 Tax Rates by Code Area

CODE 0111					
ID	NAME	TOTAL	EDUCATION	GOVERNMENT	NON-LIMITED
001	COLUMBIA COUNTY	1.5389		1.3161	0.2228
002	JAIL OPERATIONS - 3 YEAR LEVY	0.5797		0.5797	
010	COLUMBIA 4H & EXTENSION	0.0539		0.0539	
015	COL 9-1-1 COMM DISTR	0.2409		0.2409	
016	COL 911 LO LEVY	0.2900		0.2900	
020	COLUMBIA VECTOR	0.1195		0.1195	
060	PORT OF ST HELENS	0.0828		0.0828	
111	COLUMBIA SWCD	0.0943		0.0943	
275	COLUMBIA RIVER FIRE	2.9731		2.9731	
300	NW REGIONAL ESD	0.1451	0.1451		
330	SCAPPOOSE 1 JT SCHOOL	6.9002	4.9725		1.9277
390	PORTLAND COMM COLLEGE	0.2828	0.2828		
391	PORTLAND COMM COLLEGE	0.3957			0.3957
802	CCDA - COLCO DEV AGENCY	0.1392		0.1392	
		13.8361	5.4004	5.8895	2.5462

CODE 0114					
ID	NAME	TOTAL	EDUCATION	GOVERNMENT	NON-LIMITED
001	COLUMBIA COUNTY	1.5389		1.3161	0.2228
002	JAIL OPERATIONS - 3 YEAR LEVY	0.5797		0.5797	
010	COLUMBIA 4H & EXTENSION	0.0539		0.0539	
015	COL 9-1-1 COMM DISTR	0.2409		0.2409	
016	COL 911 LO LEVY	0.2900		0.2900	
020	COLUMBIA VECTOR	0.1195		0.1195	
060	PORT OF ST HELENS	0.0828		0.0828	
111	COLUMBIA SWCD	0.0943		0.0943	
300	NW REGIONAL ESD	0.1451	0.1451		
330	SCAPPOOSE 1 JT SCHOOL	6.9002	4.9725		1.9277
390	PORTLAND COMM COLLEGE	0.2828	0.2828		
391	PORTLAND COMM COLLEGE	0.3957			0.3957
802	CCDA - COLCO DEV AGENCY	0.1392		0.1392	
		10.8630	5.4004	2.9164	2.5462

CODE 0201					
ID	NAME	TOTAL	EDUCATION	GOVERNMENT	NON-LIMITED
001	COLUMBIA COUNTY	1.5389		1.3161	0.2228
002	JAIL OPERATIONS - 3 YEAR LEVY	0.5797		0.5797	
010	COLUMBIA 4H & EXTENSION	0.0539		0.0539	
015	COL 9-1-1 COMM DISTR	0.2409		0.2409	
016	COL 911 LO LEVY	0.2900		0.2900	
020	COLUMBIA VECTOR	0.1195		0.1195	
025	GTR ST HELENS PK & REC	0.2347		0.2347	
060	PORT OF ST HELENS	0.0828		0.0828	
111	COLUMBIA SWCD	0.0943		0.0943	
175	ST HELENS CITY	1.9078		1.9078	
275	COLUMBIA RIVER FIRE	2.9731		2.9731	
300	NW REGIONAL ESD	0.1451	0.1451		
310	ST HELENS 502 SCHOOL	6.3733	5.0297		1.3436
390	PORTLAND COMM COLLEGE	0.2828	0.2828		
391	PORTLAND COMM COLLEGE	0.3957			0.3957
802	CCDA - COLCO DEV AGENCY	0.1392		0.1392	
		15.4517	5.4576	8.0320	1.9621

CODE 0202					
ID	NAME	TOTAL	EDUCATION	GOVERNMENT	NON-LIMITED
001	COLUMBIA COUNTY	1.5389		1.3161	0.2228
002	JAIL OPERATIONS - 3 YEAR LEVY	0.5797		0.5797	
010	COLUMBIA 4H & EXTENSION	0.0539		0.0539	
015	COL 9-1-1 COMM DISTR	0.2409		0.2409	
016	COL 911 LO LEVY	0.2900		0.2900	
020	COLUMBIA VECTOR	0.1195		0.1195	
025	GTR ST HELENS PK & REC	0.2347		0.2347	
060	PORT OF ST HELENS	0.0828		0.0828	
111	COLUMBIA SWCD	0.0943		0.0943	
175	ST HELENS CITY	1.9078		1.9078	
275	COLUMBIA RIVER FIRE	2.9731		2.9731	
300	NW REGIONAL ESD	0.1451	0.1451		
310	ST HELENS 502 SCHOOL	6.3733	5.0297		1.3436
390	PORTLAND COMM COLLEGE	0.2828	0.2828		
391	PORTLAND COMM COLLEGE	0.3957			0.3957
802	CCDA - COLCO DEV AGENCY	0.1392		0.1392	
		15.4517	5.4576	8.0320	1.9621

CODE 0203					
ID	NAME	TOTAL	EDUCATION	GOVERNMENT	NON-LIMITED
001	COLUMBIA COUNTY	1.5389		1.3161	0.2228
002	JAIL OPERATIONS - 3 YEAR LEVY	0.5797		0.5797	
010	COLUMBIA 4H & EXTENSION	0.0539		0.0539	
015	COL 9-1-1 COMM DISTR	0.2409		0.2409	
016	COL 911 LO LEVY	0.2900		0.2900	
020	COLUMBIA VECTOR	0.1195		0.1195	
025	GTR ST HELENS PK & REC	0.2347		0.2347	
060	PORT OF ST HELENS	0.0828		0.0828	
111	COLUMBIA SWCD	0.0943		0.0943	
115	CITY COLUMBIA CITY	1.8046		1.8046	
275	COLUMBIA RIVER FIRE	2.9731		2.9731	
300	NW REGIONAL ESD	0.1451	0.1451		
310	ST HELENS 502 SCHOOL	6.3733	5.0297		1.3436
390	PORTLAND COMM COLLEGE	0.2828	0.2828		
391	PORTLAND COMM COLLEGE	0.3957			0.3957
802	CCDA - COLCO DEV AGENCY	0.1392		0.1392	
		15.3485	5.4576	7.9288	1.9621

CODE 0204					
ID	NAME	TOTAL	EDUCATION	GOVERNMENT	NON-LIMITED
001	COLUMBIA COUNTY	1.5389		1.3161	0.2228
002	JAIL OPERATIONS - 3 YEAR LEVY	0.5797		0.5797	
010	COLUMBIA 4H & EXTENSION	0.0539		0.0539	
015	COL 9-1-1 COMM DISTR	0.2409		0.2409	
016	COL 911 LO LEVY	0.2900		0.2900	
025	GTR ST HELENS PK & REC	0.2347		0.2347	
111	COLUMBIA SWCD	0.0943		0.0943	
275	COLUMBIA RIVER FIRE	2.9731		2.9731	
300	NW REGIONAL ESD	0.1451	0.1451		
310	ST HELENS 502 SCHOOL	6.3733	5.0297		1.3436
390	PORTLAND COMM COLLEGE	0.2828	0.2828		
391	PORTLAND COMM COLLEGE	0.3957			0.3957
802	CCDA - COLCO DEV AGENCY	0.1250		0.1250	
		13.3274	5.4576	5.9077	1.9621

2016-17 Tax Rates by Code Area

CODE 0205					
ID	NAME	TOTAL	EDUCATION	GOVERNMENT	NON-LIMITED
001	COLUMBIA COUNTY	1.5389		1.3161	0.2228
002	JAIL OPERATIONS - 3 YEAR LEVY	0.5797		0.5797	
010	COLUMBIA 4H & EXTENSION	0.0539		0.0539	
015	COL 9-1-1 COMM DISTR	0.2409		0.2409	
016	COL 911 LO LEVY	0.2900		0.2900	
020	COLUMBIA VECTOR	0.1195		0.1195	
025	GTR ST HELENS PK & REC	0.2347		0.2347	
060	PORT OF ST HELENS	0.0828		0.0828	
112	WEST MULTNOMAH SWCD	0.0750		0.0750	
260	SAUVIE ISLAND RFPD # 30	0.7894		0.7894	
261	SAUVIE ISLAND RFPD # 30 LOCAL OPTION	0.3500		0.3500	
300	NW REGIONAL ESD	0.1451	0.1451		
310	ST HELENS 502 SCHOOL	6.3733	5.0297		1.3436
390	PORTLAND COMM COLLEGE	0.2828	0.2828		
391	PORTLAND COMM COLLEGE	0.3957			0.3957
802	CCDA - COLCO DEV AGENCY	0.1335		0.1335	
		11.6852	5.4576	4.2655	1.9621

CODE 0206					
ID	NAME	TOTAL	EDUCATION	GOVERNMENT	NON-LIMITED
001	COLUMBIA COUNTY	1.5389		1.3161	0.2228
002	JAIL OPERATIONS - 3 YEAR LEVY	0.5797		0.5797	
010	COLUMBIA 4H & EXTENSION	0.0539		0.0539	
015	COL 9-1-1 COMM DISTR	0.2409		0.2409	
016	COL 911 LO LEVY	0.2900		0.2900	
025	GTR ST HELENS PK & REC	0.2347		0.2347	
111	COLUMBIA SWCD	0.0943		0.0943	
300	NW REGIONAL ESD	0.1451	0.1451		
310	ST HELENS 502 SCHOOL	6.3733	5.0297		1.3436
390	PORTLAND COMM COLLEGE	0.2828	0.2828		
391	PORTLAND COMM COLLEGE	0.3957			0.3957
802	CCDA - COLCO DEV AGENCY	0.1250		0.1250	
		10.3543	5.4576	2.9346	1.9621

CODE 0207					
ID	NAME	TOTAL	EDUCATION	GOVERNMENT	NON-LIMITED
001	COLUMBIA COUNTY	1.5389		1.3161	0.2228
002	JAIL OPERATIONS - 3 YEAR LEVY	0.5797		0.5797	
010	COLUMBIA 4H & EXTENSION	0.0539		0.0539	
015	COL 9-1-1 COMM DISTR	0.2409		0.2409	
016	COL 911 LO LEVY	0.2900		0.2900	
020	COLUMBIA VECTOR	0.1195		0.1195	
025	GTR ST HELENS PK & REC	0.2347		0.2347	
060	PORT OF ST HELENS	0.0828		0.0828	
111	COLUMBIA SWCD	0.0943		0.0943	
300	NW REGIONAL ESD	0.1451	0.1451		
310	ST HELENS 502 SCHOOL	6.3733	5.0297		1.3436
390	PORTLAND COMM COLLEGE	0.2828	0.2828		
391	PORTLAND COMM COLLEGE	0.3957			0.3957
802	CCDA - COLCO DEV AGENCY	0.1392		0.1392	
		10.5708	5.4576	3.1511	1.9621

CODE 0208					
ID	NAME	TOTAL	EDUCATION	GOVERNMENT	NON-LIMITED
001	COLUMBIA COUNTY	1.5389		1.3161	0.2228
002	JAIL OPERATIONS - 3 YEAR LEVY	0.5797		0.5797	
010	COLUMBIA 4H & EXTENSION	0.0539		0.0539	
015	COL 9-1-1 COMM DISTR	0.2409		0.2409	
016	COL 911 LO LEVY	0.2900		0.2900	
020	COLUMBIA VECTOR	0.1195		0.1195	
025	GTR ST HELENS PK & REC	0.2347		0.2347	
060	PORT OF ST HELENS	0.0828		0.0828	
111	COLUMBIA SWCD	0.0943		0.0943	
275	COLUMBIA RIVER FIRE	2.9731		2.9731	
300	NW REGIONAL ESD	0.1451	0.1451		
310	ST HELENS 502 SCHOOL	6.3733	5.0297		1.3436
390	PORTLAND COMM COLLEGE	0.2828	0.2828		
391	PORTLAND COMM COLLEGE	0.3957			0.3957
802	CCDA - COLCO DEV AGENCY	0.1392		0.1392	
		13.5439	5.4576	6.1242	1.9621

CODE 0209					
ID	NAME	TOTAL	EDUCATION	GOVERNMENT	NON-LIMITED
001	COLUMBIA COUNTY	1.5389		1.3161	0.2228
002	JAIL OPERATIONS - 3 YEAR LEVY	0.5797		0.5797	
010	COLUMBIA 4H & EXTENSION	0.0539		0.0539	
015	COL 9-1-1 COMM DISTR	0.2409		0.2409	
016	COL 911 LO LEVY	0.2900		0.2900	
020	COLUMBIA VECTOR	0.1195		0.1195	
025	GTR ST HELENS PK & REC	0.2347		0.2347	
040	RAINIER CEMETERY	0.0553		0.0553	
060	PORT OF ST HELENS	0.0828		0.0828	
111	COLUMBIA SWCD	0.0943		0.0943	
275	COLUMBIA RIVER FIRE	2.9731		2.9731	
300	NW REGIONAL ESD	0.1451	0.1451		
310	ST HELENS 502 SCHOOL	6.3733	5.0297		1.3436
390	PORTLAND COMM COLLEGE	0.2828	0.2828		
391	PORTLAND COMM COLLEGE	0.3957			0.3957
802	CCDA - COLCO DEV AGENCY	0.1548		0.1548	
		13.6148	5.4576	6.1951	1.9621

2016-17 Tax Rates by Code Area

CODE 0210					
ID	NAME	TOTAL	EDUCATION	GOVERNMENT	NON-LIMITED
001	COLUMBIA COUNTY	1.5389		1.3161	0.2228
002	JAIL OPERATIONS - 3 YEAR LEVY	0.5797		0.5797	
010	COLUMBIA 4H & EXTENSION	0.0539		0.0539	
015	COL 9-1-1 COMM DISTR	0.2409		0.2409	
016	COL 911 LO LEVY	0.2900		0.2900	
020	COLUMBIA VECTOR	0.1195		0.1195	
025	GTR ST HELENS PK & REC	0.2347		0.2347	
040	RAINIER CEMETERY	0.0553		0.0553	
060	PORT OF ST HELENS	0.0828		0.0828	
111	COLUMBIA SWCD	0.0943		0.0943	
275	COLUMBIA RIVER FIRE	2.9731		2.9731	
300	NW REGIONAL ESD	0.1451	0.1451		
310	ST HELENS 502 SCHOOL	6.3733	5.0297		1.3436
390	PORTLAND COMM COLLEGE	0.2828	0.2828		
391	PORTLAND COMM COLLEGE	0.3957			0.3957
802	CCDA - COLCO DEV AGENCY	0.1548		0.1548	
		13.6148	5.4576	6.1951	1.9621

CODE 0211					
ID	NAME	TOTAL	EDUCATION	GOVERNMENT	NON-LIMITED
001	COLUMBIA COUNTY	1.5389		1.3161	0.2228
002	JAIL OPERATIONS - 3 YEAR LEVY	0.5797		0.5797	
010	COLUMBIA 4H & EXTENSION	0.0539		0.0539	
015	COL 9-1-1 COMM DISTR	0.2409		0.2409	
016	COL 911 LO LEVY	0.2900		0.2900	
020	COLUMBIA VECTOR	0.1195		0.1195	
025	GTR ST HELENS PK & REC	0.2347		0.2347	
060	PORT OF ST HELENS	0.0828		0.0828	
111	COLUMBIA SWCD	0.0943		0.0943	
275	COLUMBIA RIVER FIRE	2.9731		2.9731	
300	NW REGIONAL ESD	0.1451	0.1451		
310	ST HELENS 502 SCHOOL	6.3733	5.0297		1.3436
390	PORTLAND COMM COLLEGE	0.2828	0.2828		
391	PORTLAND COMM COLLEGE	0.3957			0.3957
802	CCDA - COLCO DEV AGENCY	0.1392		0.1392	
		13.5439	5.4576	6.1242	1.9621

CODE 0212					
ID	NAME	TOTAL	EDUCATION	GOVERNMENT	NON-LIMITED
001	COLUMBIA COUNTY	1.5389		1.3161	0.2228
002	JAIL OPERATIONS - 3 YEAR LEVY	0.5797		0.5797	
010	COLUMBIA 4H & EXTENSION	0.0539		0.0539	
015	COL 9-1-1 COMM DISTR	0.2409		0.2409	
016	COL 911 LO LEVY	0.2900		0.2900	
020	COLUMBIA VECTOR	0.1195		0.1195	
060	PORT OF ST HELENS	0.0828		0.0828	
111	COLUMBIA SWCD	0.0943		0.0943	
275	COLUMBIA RIVER FIRE	2.9731		2.9731	
300	NW REGIONAL ESD	0.1451	0.1451		
310	ST HELENS 502 SCHOOL	6.3733	5.0297		1.3436
390	PORTLAND COMM COLLEGE	0.2828	0.2828		
391	PORTLAND COMM COLLEGE	0.3957			0.3957
802	CCDA - COLCO DEV AGENCY	0.1392		0.1392	
		13.3092	5.4576	5.8895	1.9621

CODE 0213

ID	NAME	TOTAL	EDUCATION	GOVERNMENT	NON-LIMITED
001	COLUMBIA COUNTY	1.5389		1.3161	0.2228
002	JAIL OPERATIONS - 3 YEAR LEVY	0.5797		0.5797	
010	COLUMBIA 4H & EXTENSION	0.0539		0.0539	
015	COL 9-1-1 COMM DISTR	0.2409		0.2409	
016	COL 911 LO LEVY	0.2900		0.2900	
020	COLUMBIA VECTOR	0.1195		0.1195	
060	PORT OF ST HELENS	0.0828		0.0828	
111	COLUMBIA SWCD	0.0943		0.0943	
275	COLUMBIA RIVER FIRE	2.9731		2.9731	
300	NW REGIONAL ESD	0.1451	0.1451		
310	ST HELENS 502 SCHOOL	6.3733	5.0297		1.3436
390	PORTLAND COMM COLLEGE	0.2828	0.2828		
391	PORTLAND COMM COLLEGE	0.3957			0.3957
802	CCDA - COLCO DEV AGENCY	0.1392		0.1392	
		13.3092	5.4576	5.8895	1.9621

CODE 0215

ID	NAME	TOTAL	EDUCATION	GOVERNMENT	NON-LIMITED
001	COLUMBIA COUNTY	1.5389		1.3161	0.2228
002	JAIL OPERATIONS - 3 YEAR LEVY	0.5797		0.5797	
010	COLUMBIA 4H & EXTENSION	0.0539		0.0539	
015	COL 9-1-1 COMM DISTR	0.2409		0.2409	
016	COL 911 LO LEVY	0.2900		0.2900	
020	COLUMBIA VECTOR	0.1195		0.1195	
025	GTR ST HELENS PK & REC	0.2347		0.2347	
040	RAINIER CEMETERY	0.0553		0.0553	
060	PORT OF ST HELENS	0.0828		0.0828	
111	COLUMBIA SWCD	0.0943		0.0943	
300	NW REGIONAL ESD	0.1451	0.1451		
310	ST HELENS 502 SCHOOL	6.3733	5.0297		1.3436
390	PORTLAND COMM COLLEGE	0.2828	0.2828		
391	PORTLAND COMM COLLEGE	0.3957			0.3957
802	CCDA - COLCO DEV AGENCY	0.1548		0.1548	
		10.6417	5.4576	3.2220	1.9621

CODE 0216

ID	NAME	TOTAL	EDUCATION	GOVERNMENT	NON-LIMITED
001	COLUMBIA COUNTY	1.5389		1.3161	0.2228
002	JAIL OPERATIONS - 3 YEAR LEVY	0.5797		0.5797	
010	COLUMBIA 4H & EXTENSION	0.0539		0.0539	
015	COL 9-1-1 COMM DISTR	0.2409		0.2409	
016	COL 911 LO LEVY	0.2900		0.2900	
020	COLUMBIA VECTOR	0.1195		0.1195	
025	GTR ST HELENS PK & REC	0.2347		0.2347	
060	PORT OF ST HELENS	0.0828		0.0828	
111	COLUMBIA SWCD	0.0943		0.0943	
275	COLUMBIA RIVER FIRE	2.9731		2.9731	
300	NW REGIONAL ESD	0.1451	0.1451		
310	ST HELENS 502 SCHOOL	6.3733	5.0297		1.3436
390	PORTLAND COMM COLLEGE	0.2828	0.2828		
391	PORTLAND COMM COLLEGE	0.3957			0.3957
802	CCDA - COLCO DEV AGENCY	0.1392		0.1392	
		13.5439	5.4576	6.1242	1.9621

2016-17 Tax Rates by Code Area

CODE 0217					
ID	NAME	TOTAL	EDUCATION	GOVERNMENT	NON-LIMITED
001	COLUMBIA COUNTY	1.5389		1.3161	0.2228
002	JAIL OPERATIONS - 3 YEAR LEVY	0.5797		0.5797	
010	COLUMBIA 4H & EXTENSION	0.0539		0.0539	
015	COL 9-1-1 COMM DISTR	0.2409		0.2409	
016	COL 911 LO LEVY	0.2900		0.2900	
020	COLUMBIA VECTOR	0.1195		0.1195	
025	GTR ST HELENS PK & REC	0.2347		0.2347	
040	RAINIER CEMETERY	0.0553		0.0553	
060	PORT OF ST HELENS	0.0828		0.0828	
111	COLUMBIA SWCD	0.0943		0.0943	
275	COLUMBIA RIVER FIRE	2.9731		2.9731	
300	NW REGIONAL ESD	0.1451	0.1451		
310	ST HELENS 502 SCHOOL	6.3733	5.0297		1.3436
802	CCDA - COLCO DEV AGENCY	0.1548		0.1548	
		12.9363	5.1748	6.1951	1.5664

CODE 0218					
ID	NAME	TOTAL	EDUCATION	GOVERNMENT	NON-LIMITED
001	COLUMBIA COUNTY	1.5389		1.3161	0.2228
002	JAIL OPERATIONS - 3 YEAR LEVY	0.5797		0.5797	
010	COLUMBIA 4H & EXTENSION	0.0539		0.0539	
015	COL 9-1-1 COMM DISTR	0.2409		0.2409	
016	COL 911 LO LEVY	0.2900		0.2900	
025	GTR ST HELENS PK & REC	0.2347		0.2347	
111	COLUMBIA SWCD	0.0943		0.0943	
300	NW REGIONAL ESD	0.1451	0.1451		
310	ST HELENS 502 SCHOOL	6.3733	5.0297		1.3436
390	PORTLAND COMM COLLEGE	0.2828	0.2828		
391	PORTLAND COMM COLLEGE	0.3957			0.3957
802	CCDA - COLCO DEV AGENCY	0.1250		0.1250	
		10.3543	5.4576	2.9346	1.9621

CODE 0219					
ID	NAME	TOTAL	EDUCATION	GOVERNMENT	NON-LIMITED
001	COLUMBIA COUNTY	1.5389		1.3161	0.2228
002	JAIL OPERATIONS - 3 YEAR LEVY	0.5797		0.5797	
010	COLUMBIA 4H & EXTENSION	0.0539		0.0539	
015	COL 9-1-1 COMM DISTR	0.2409		0.2409	
016	COL 911 LO LEVY	0.2900		0.2900	
020	COLUMBIA VECTOR	0.1195		0.1195	
025	GTR ST HELENS PK & REC	0.2347		0.2347	
060	PORT OF ST HELENS	0.0828		0.0828	
111	COLUMBIA SWCD	0.0943		0.0943	
300	NW REGIONAL ESD	0.1451	0.1451		
310	ST HELENS 502 SCHOOL	6.3733	5.0297		1.3436
390	PORTLAND COMM COLLEGE	0.2828	0.2828		
391	PORTLAND COMM COLLEGE	0.3957			0.3957
802	CCDA - COLCO DEV AGENCY	0.1392		0.1392	
		10.5708	5.4576	3.1511	1.9621

CODE 0220					
ID	NAME	TOTAL	EDUCATION	GOVERNMENT	NON-LIMITED
001	COLUMBIA COUNTY	1.5389		1.3161	0.2228
002	JAIL OPERATIONS - 3 YEAR LEVY	0.5797		0.5797	
010	COLUMBIA 4H & EXTENSION	0.0539		0.0539	
015	COL 9-1-1 COMM DISTR	0.2409		0.2409	
016	COL 911 LO LEVY	0.2900		0.2900	
020	COLUMBIA VECTOR	0.1195		0.1195	
025	GTR ST HELENS PK & REC	0.2347		0.2347	
040	RAINIER CEMETERY	0.0553		0.0553	
060	PORT OF ST HELENS	0.0828		0.0828	
111	COLUMBIA SWCD	0.0943		0.0943	
300	NW REGIONAL ESD	0.1451	0.1451		
310	ST HELENS 502 SCHOOL	6.3733	5.0297		1.3436
802	CCDA - COLCO DEV AGENCY	0.1548		0.1548	
		9.9632	5.1748	3.2220	1.5664

CODE 0301					
ID	NAME	TOTAL	EDUCATION	GOVERNMENT	NON-LIMITED
001	COLUMBIA COUNTY	1.4163		1.2112	0.2051
002	JAIL OPERATIONS - 3 YEAR LEVY	0.5797		0.5797	
010	COLUMBIA 4H & EXTENSION	0.0497		0.0497	
015	COL 9-1-1 COMM DISTR	0.2217		0.2217	
016	COL 911 LO LEVY	0.2900		0.2900	
020	COLUMBIA VECTOR	0.1099		0.1099	
040	RAINIER CEMETERY	0.0500		0.0500	
060	PORT OF ST HELENS	0.0762		0.0762	
111	COLUMBIA SWCD	0.0868		0.0868	
160	RAINIER CITY	7.2807		4.8350	2.4457
169	REDCO SPECIAL LEVY				
275	COLUMBIA RIVER FIRE	2.7477		2.7477	
300	NW REGIONAL ESD	0.1336	0.1336		
320	RAINIER 13 SCHOOL	5.0273	5.0273		
801	REDCO	1.3770		1.3770	
802	CCDA - COLCO DEV AGENCY	0.1548		0.1548	
		19.6014	5.1609	11.7897	2.6508

CODE 0302					
ID	NAME	TOTAL	EDUCATION	GOVERNMENT	NON-LIMITED
001	COLUMBIA COUNTY	1.5389		1.3161	0.2228
002	JAIL OPERATIONS - 3 YEAR LEVY	0.5797		0.5797	
010	COLUMBIA 4H & EXTENSION	0.0539		0.0539	
015	COL 9-1-1 COMM DISTR	0.2409		0.2409	
016	COL 911 LO LEVY	0.2900		0.2900	
020	COLUMBIA VECTOR	0.1195		0.1195	
040	RAINIER CEMETERY	0.0553		0.0553	
060	PORT OF ST HELENS	0.0828		0.0828	
111	COLUMBIA SWCD	0.0943		0.0943	
150	PRESCOTT CITY	2.4586		2.4586	
275	COLUMBIA RIVER FIRE	2.9731		2.9731	
300	NW REGIONAL ESD	0.1451	0.1451		
320	RAINIER 13 SCHOOL	5.4360	5.4360		
802	CCDA - COLCO DEV AGENCY	0.1548		0.1548	
		14.2229	5.5811	8.4190	0.2228

2016-17 Tax Rates by Code Area

CODE 0303					
ID	NAME	TOTAL	EDUCATION	GOVERNMENT	NON-LIMITED
001	COLUMBIA COUNTY	1.5389		1.3161	0.2228
002	JAIL OPERATIONS - 3 YEAR LEVY	0.5797		0.5797	
010	COLUMBIA 4H & EXTENSION	0.0539		0.0539	
015	COL 9-1-1 COMM DISTR	0.2409		0.2409	
016	COL 911 LO LEVY	0.2900		0.2900	
040	RAINIER CEMETERY	0.0553		0.0553	
111	COLUMBIA SWCD	0.0943		0.0943	
275	COLUMBIA RIVER FIRE	2.9731		2.9731	
300	NW REGIONAL ESD	0.1451	0.1451		
320	RAINIER 13 SCHOOL	5.4360	5.4360		
802	CCDA - COLCO DEV AGENCY	0.1406		0.1406	
		11.5478	5.5811	5.7439	0.2228

CODE 0304					
ID	NAME	TOTAL	EDUCATION	GOVERNMENT	NON-LIMITED
001	COLUMBIA COUNTY	1.5389		1.3161	0.2228
002	JAIL OPERATIONS - 3 YEAR LEVY	0.5797		0.5797	
010	COLUMBIA 4H & EXTENSION	0.0539		0.0539	
015	COL 9-1-1 COMM DISTR	0.2409		0.2409	
016	COL 911 LO LEVY	0.2900		0.2900	
040	RAINIER CEMETERY	0.0553		0.0553	
050	CLATSKANIE PARK & REC	0.2372		0.2372	
055	CLATSKANIE LIBRARY	0.1954		0.1954	
111	COLUMBIA SWCD	0.0943		0.0943	
275	COLUMBIA RIVER FIRE	2.9731		2.9731	
300	NW REGIONAL ESD	0.1451	0.1451		
320	RAINIER 13 SCHOOL	5.4360	5.4360		
802	CCDA - COLCO DEV AGENCY	0.3431		0.3431	
		12.1829	5.5811	6.3790	0.2228

CODE 0305					
ID	NAME	TOTAL	EDUCATION	GOVERNMENT	NON-LIMITED
001	COLUMBIA COUNTY	1.5389		1.3161	0.2228
002	JAIL OPERATIONS - 3 YEAR LEVY	0.5797		0.5797	
010	COLUMBIA 4H & EXTENSION	0.0539		0.0539	
015	COL 9-1-1 COMM DISTR	0.2409		0.2409	
016	COL 911 LO LEVY	0.2900		0.2900	
020	COLUMBIA VECTOR	0.1195		0.1195	
040	RAINIER CEMETERY	0.0553		0.0553	
060	PORT OF ST HELENS	0.0828		0.0828	
111	COLUMBIA SWCD	0.0943		0.0943	
275	COLUMBIA RIVER FIRE	2.9731		2.9731	
300	NW REGIONAL ESD	0.1451	0.1451		
320	RAINIER 13 SCHOOL	5.4360	5.4360		
802	CCDA - COLCO DEV AGENCY	0.1548		0.1548	
		11.7643	5.5811	5.9604	0.2228

CODE 0306					
ID	NAME	TOTAL	EDUCATION	GOVERNMENT	NON-LIMITED
001	COLUMBIA COUNTY	1.5389		1.3161	0.2228
002	JAIL OPERATIONS - 3 YEAR LEVY	0.5797		0.5797	
010	COLUMBIA 4H & EXTENSION	0.0539		0.0539	
015	COL 9-1-1 COMM DISTR	0.2409		0.2409	
016	COL 911 LO LEVY	0.2900		0.2900	
020	COLUMBIA VECTOR	0.1195		0.1195	
040	RAINIER CEMETERY	0.0553		0.0553	
050	CLATSKANIE PARK & REC	0.2372		0.2372	
055	CLATSKANIE LIBRARY	0.1954		0.1954	
060	PORT OF ST HELENS	0.0828		0.0828	
111	COLUMBIA SWCD	0.0943		0.0943	
220	CLATSKANIE RFPD	1.1483		1.1483	
221	CLATSKANIE RFPD LO LEVY	1.2533		1.2533	
300	NW REGIONAL ESD	0.1451	0.1451		
320	RAINIER 13 SCHOOL	5.4360	5.4360		
802	CCDA - COLCO DEV AGENCY	0.9288		0.9288	
		12.3994	5.5811	6.5955	0.2228

CODE 0308					
ID	NAME	TOTAL	EDUCATION	GOVERNMENT	NON-LIMITED
001	COLUMBIA COUNTY	1.5389		1.3161	0.2228
002	JAIL OPERATIONS - 3 YEAR LEVY	0.5797		0.5797	
010	COLUMBIA 4H & EXTENSION	0.0539		0.0539	
015	COL 9-1-1 COMM DISTR	0.2409		0.2409	
016	COL 911 LO LEVY	0.2900		0.2900	
020	COLUMBIA VECTOR	0.1195		0.1195	
040	RAINIER CEMETERY	0.0553		0.0553	
050	CLATSKANIE PARK & REC	0.2372		0.2372	
055	CLATSKANIE LIBRARY	0.1954		0.1954	
060	PORT OF ST HELENS	0.0828		0.0828	
111	COLUMBIA SWCD	0.0943		0.0943	
220	CLATSKANIE RFPD	1.1483		1.1483	
221	CLATSKANIE RFPD LO LEVY	1.2533		1.2533	
300	NW REGIONAL ESD	0.1451	0.1451		
320	RAINIER 13 SCHOOL	5.4360	5.4360		
802	CCDA - COLCO DEV AGENCY	0.9288		0.9288	
		12.3994	5.5811	6.5955	0.2228

2016-17 Tax Rates by Code Area

CODE 0309					
ID	NAME	TOTAL	EDUCATION	GOVERNMENT	NON-LIMITED
001	COLUMBIA COUNTY	1.4163		1.2112	0.2051
002	JAIL OPERATIONS - 3 YEAR LEVY	0.5797		0.5797	
010	COLUMBIA 4H & EXTENSION	0.0497		0.0497	
015	COL 9-1-1 COMM DISTR	0.2217		0.2217	
016	COL 911 LO LEVY	0.2900		0.2900	
020	COLUMBIA VECTOR	0.1099		0.1099	
040	RAINIER CEMETERY	0.0500		0.0500	
060	PORT OF ST HELENS	0.0762		0.0762	
111	COLUMBIA SWCD	0.0868		0.0868	
160	RAINIER CITY	7.2807		4.8350	2.4457
169	REDCO SPECIAL LEVY				
275	COLUMBIA RIVER FIRE	2.7477		2.7477	
300	NW REGIONAL ESD	0.1336	0.1336		
320	RAINIER 13 SCHOOL	5.0273	5.0273		
801	REDCO	1.3770		1.3770	
802	CCDA - COLCO DEV AGENCY	0.1548		0.1548	
		19.6014	5.1609	11.7897	2.6508

CODE 0310					
ID	NAME	TOTAL	EDUCATION	GOVERNMENT	NON-LIMITED
001	COLUMBIA COUNTY	1.5389		1.3161	0.2228
002	JAIL OPERATIONS - 3 YEAR LEVY	0.5797		0.5797	
010	COLUMBIA 4H & EXTENSION	0.0539		0.0539	
015	COL 9-1-1 COMM DISTR	0.2409		0.2409	
016	COL 911 LO LEVY	0.2900		0.2900	
020	COLUMBIA VECTOR	0.1195		0.1195	
050	CLATSKANIE PARK & REC	0.2372		0.2372	
055	CLATSKANIE LIBRARY	0.1954		0.1954	
060	PORT OF ST HELENS	0.0828		0.0828	
111	COLUMBIA SWCD	0.0943		0.0943	
300	NW REGIONAL ESD	0.1451	0.1451		
320	RAINIER 13 SCHOOL	5.4360	5.4360		
802	CCDA - COLCO DEV AGENCY	0.3417		0.3417	
		9.3554	5.5811	3.5515	0.2228

CODE 0311					
ID	NAME	TOTAL	EDUCATION	GOVERNMENT	NON-LIMITED
001	COLUMBIA COUNTY	1.5389		1.3161	0.2228
002	JAIL OPERATIONS - 3 YEAR LEVY	0.5797		0.5797	
010	COLUMBIA 4H & EXTENSION	0.0539		0.0539	
015	COL 9-1-1 COMM DISTR	0.2409		0.2409	
016	COL 911 LO LEVY	0.2900		0.2900	
020	COLUMBIA VECTOR	0.1195		0.1195	
040	RAINIER CEMETERY	0.0553		0.0553	
050	CLATSKANIE PARK & REC	0.2372		0.2372	
055	CLATSKANIE LIBRARY	0.1954		0.1954	
060	PORT OF ST HELENS	0.0828		0.0828	
111	COLUMBIA SWCD	0.0943		0.0943	
300	NW REGIONAL ESD	0.1451	0.1451		
320	RAINIER 13 SCHOOL	5.4360	5.4360		
802	CCDA - COLCO DEV AGENCY	0.3573		0.3573	
		9.4263	5.5811	3.6224	0.2228

CODE 0312

ID	NAME	TOTAL	EDUCATION	GOVERNMENT	NON-LIMITED
001	COLUMBIA COUNTY	1.5389		1.3161	0.2228
002	JAIL OPERATIONS - 3 YEAR LEVY	0.5797		0.5797	
010	COLUMBIA 4H & EXTENSION	0.0539		0.0539	
015	COL 9-1-1 COMM DISTR	0.2409		0.2409	
016	COL 911 LO LEVY	0.2900		0.2900	
020	COLUMBIA VECTOR	0.1195		0.1195	
040	RAINIER CEMETERY	0.0553		0.0553	
060	PORT OF ST HELENS	0.0828		0.0828	
111	COLUMBIA SWCD	0.0943		0.0943	
275	COLUMBIA RIVER FIRE	2.9731		2.9731	
300	NW REGIONAL ESD	0.1451	0.1451		
320	RAINIER 13 SCHOOL	5.4360	5.4360		
802	CCDA - COLCO DEV AGENCY	0.1548		0.1548	
		11.7643	5.5811	5.9604	0.2228

CODE 0313

ID	NAME	TOTAL	EDUCATION	GOVERNMENT	NON-LIMITED
001	COLUMBIA COUNTY	1.5389		1.3161	0.2228
002	JAIL OPERATIONS - 3 YEAR LEVY	0.5797		0.5797	
010	COLUMBIA 4H & EXTENSION	0.0539		0.0539	
015	COL 9-1-1 COMM DISTR	0.2409		0.2409	
016	COL 911 LO LEVY	0.2900		0.2900	
020	COLUMBIA VECTOR	0.1195		0.1195	
040	RAINIER CEMETERY	0.0553		0.0553	
060	PORT OF ST HELENS	0.0828		0.0828	
111	COLUMBIA SWCD	0.0943		0.0943	
300	NW REGIONAL ESD	0.1451	0.1451		
320	RAINIER 13 SCHOOL	5.4360	5.4360		
802	CCDA - COLCO DEV AGENCY	0.1548		0.1548	
		8.7912	5.5811	2.9873	0.2228

CODE 0315

ID	NAME	TOTAL	EDUCATION	GOVERNMENT	NON-LIMITED
001	COLUMBIA COUNTY	1.5389		1.3161	0.2228
002	JAIL OPERATIONS - 3 YEAR LEVY	0.5797		0.5797	
010	COLUMBIA 4H & EXTENSION	0.0539		0.0539	
015	COL 9-1-1 COMM DISTR	0.2409		0.2409	
016	COL 911 LO LEVY	0.2900		0.2900	
020	COLUMBIA VECTOR	0.1195		0.1195	
060	PORT OF ST HELENS	0.0828		0.0828	
111	COLUMBIA SWCD	0.0943		0.0943	
300	NW REGIONAL ESD	0.1451	0.1451		
320	RAINIER 13 SCHOOL	5.4360	5.4360		
802	CCDA - COLCO DEV AGENCY	0.1392		0.1392	
		8.7203	5.5811	2.9164	0.2228

2016-17 Tax Rates by Code Area

CODE 0316					
ID	NAME	TOTAL	EDUCATION	GOVERNMENT	NON-LIMITED
001	COLUMBIA COUNTY	1.5389		1.3161	0.2228
002	JAIL OPERATIONS - 3 YEAR LEVY	0.5797		0.5797	
010	COLUMBIA 4H & EXTENSION	0.0539		0.0539	
015	COL 9-1-1 COMM DISTR	0.2409		0.2409	
016	COL 911 LO LEVY	0.2900		0.2900	
040	RAINIER CEMETERY	0.0553		0.0553	
050	CLATSKANIE PARK & REC	0.2372		0.2372	
055	CLATSKANIE LIBRARY	0.1954		0.1954	
111	COLUMBIA SWCD	0.0943		0.0943	
220	CLATSKANIE RFPD	1.1483		1.1483	
221	CLATSKANIE RFPD LO LEVY	1.2533		1.2533	
300	NW REGIONAL ESD	0.1451	0.1451		
320	RAINIER 13 SCHOOL	5.4360	5.4360		
802	CCDA - COLCO DEV AGENCY	0.9146		0.9146	
		12.1829	5.5811	6.3790	0.2228

CODE 0317					
ID	NAME	TOTAL	EDUCATION	GOVERNMENT	NON-LIMITED
001	COLUMBIA COUNTY	1.5389		1.3161	0.2228
002	JAIL OPERATIONS - 3 YEAR LEVY	0.5797		0.5797	
010	COLUMBIA 4H & EXTENSION	0.0539		0.0539	
015	COL 9-1-1 COMM DISTR	0.2409		0.2409	
016	COL 911 LO LEVY	0.2900		0.2900	
040	RAINIER CEMETERY	0.0553		0.0553	
050	CLATSKANIE PARK & REC	0.2372		0.2372	
055	CLATSKANIE LIBRARY	0.1954		0.1954	
111	COLUMBIA SWCD	0.0943		0.0943	
220	CLATSKANIE RFPD	1.1483		1.1483	
221	CLATSKANIE RFPD LO LEVY	1.2533		1.2533	
300	NW REGIONAL ESD	0.1451	0.1451		
320	RAINIER 13 SCHOOL	5.4360	5.4360		
802	CCDA - COLCO DEV AGENCY	0.9146		0.9146	
		12.1829	5.5811	6.3790	0.2228

CODE 0318					
ID	NAME	TOTAL	EDUCATION	GOVERNMENT	NON-LIMITED
001	COLUMBIA COUNTY	1.5389		1.3161	0.2228
002	JAIL OPERATIONS - 3 YEAR LEVY	0.5797		0.5797	
010	COLUMBIA 4H & EXTENSION	0.0539		0.0539	
015	COL 9-1-1 COMM DISTR	0.2409		0.2409	
016	COL 911 LO LEVY	0.2900		0.2900	
111	COLUMBIA SWCD	0.0943		0.0943	
300	NW REGIONAL ESD	0.1451	0.1451		
320	RAINIER 13 SCHOOL	5.4360	5.4360		
802	CCDA - COLCO DEV AGENCY	0.1250		0.1250	
		8.5038	5.5811	2.6999	0.2228

CODE 0319					
ID	NAME	TOTAL	EDUCATION	GOVERNMENT	NON-LIMITED
001	COLUMBIA COUNTY	1.5389		1.3161	0.2228
002	JAIL OPERATIONS - 3 YEAR LEVY	0.5797		0.5797	
010	COLUMBIA 4H & EXTENSION	0.0539		0.0539	
015	COL 9-1-1 COMM DISTR	0.2409		0.2409	
016	COL 911 LO LEVY	0.2900		0.2900	
111	COLUMBIA SWCD	0.0943		0.0943	
300	NW REGIONAL ESD	0.1451	0.1451		
320	RAINIER 13 SCHOOL	5.4360	5.4360		
802	CCDA - COLCO DEV AGENCY	0.1250		0.1250	
		8.5038	5.5811	2.6999	0.2228

CODE 0320					
ID	NAME	TOTAL	EDUCATION	GOVERNMENT	NON-LIMITED
001	COLUMBIA COUNTY	1.5389		1.3161	0.2228
002	JAIL OPERATIONS - 3 YEAR LEVY	0.5797		0.5797	
010	COLUMBIA 4H & EXTENSION	0.0539		0.0539	
015	COL 9-1-1 COMM DISTR	0.2409		0.2409	
016	COL 911 LO LEVY	0.2900		0.2900	
020	COLUMBIA VECTOR	0.1195		0.1195	
060	PORT OF ST HELENS	0.0828		0.0828	
111	COLUMBIA SWCD	0.0943		0.0943	
275	COLUMBIA RIVER FIRE	2.9731		2.9731	
300	NW REGIONAL ESD	0.1451	0.1451		
320	RAINIER 13 SCHOOL	5.4360	5.4360		
802	CCDA - COLCO DEV AGENCY	0.1392		0.1392	
		11.6934	5.5811	5.8895	0.2228

CODE 0321					
ID	NAME	TOTAL	EDUCATION	GOVERNMENT	NON-LIMITED
001	COLUMBIA COUNTY	1.5389		1.3161	0.2228
002	JAIL OPERATIONS - 3 YEAR LEVY	0.5797		0.5797	
010	COLUMBIA 4H & EXTENSION	0.0539		0.0539	
015	COL 9-1-1 COMM DISTR	0.2409		0.2409	
016	COL 911 LO LEVY	0.2900		0.2900	
050	CLATSKANIE PARK & REC	0.2372		0.2372	
055	CLATSKANIE LIBRARY	0.1954		0.1954	
111	COLUMBIA SWCD	0.0943		0.0943	
300	NW REGIONAL ESD	0.1451	0.1451		
320	RAINIER 13 SCHOOL	5.4360	5.4360		
802	CCDA - COLCO DEV AGENCY	0.3275		0.3275	
		9.1389	5.5811	3.3350	0.2228

2016-17 Tax Rates by Code Area

CODE 0322					
ID	NAME	TOTAL	EDUCATION	GOVERNMENT	NON-LIMITED
001	COLUMBIA COUNTY	1.5389		1.3161	0.2228
002	JAIL OPERATIONS - 3 YEAR LEVY	0.5797		0.5797	
010	COLUMBIA 4H & EXTENSION	0.0539		0.0539	
015	COL 9-1-1 COMM DISTR	0.2409		0.2409	
016	COL 911 LO LEVY	0.2900		0.2900	
111	COLUMBIA SWCD	0.0943		0.0943	
300	NW REGIONAL ESD	0.1451	0.1451		
320	RAINIER 13 SCHOOL	5.4360	5.4360		
802	CCDA - COLCO DEV AGENCY	0.1250		0.1250	
		8.5038	5.5811	2.6999	0.2228

CODE 0323					
ID	NAME	TOTAL	EDUCATION	GOVERNMENT	NON-LIMITED
001	COLUMBIA COUNTY	1.5389		1.3161	0.2228
002	JAIL OPERATIONS - 3 YEAR LEVY	0.5797		0.5797	
010	COLUMBIA 4H & EXTENSION	0.0539		0.0539	
015	COL 9-1-1 COMM DISTR	0.2409		0.2409	
016	COL 911 LO LEVY	0.2900		0.2900	
040	RAINIER CEMETERY	0.0553		0.0553	
111	COLUMBIA SWCD	0.0943		0.0943	
300	NW REGIONAL ESD	0.1451	0.1451		
320	RAINIER 13 SCHOOL	5.4360	5.4360		
802	CCDA - COLCO DEV AGENCY	0.1406		0.1406	
		8.5747	5.5811	2.7708	0.2228

CODE 0324					
ID	NAME	TOTAL	EDUCATION	GOVERNMENT	NON-LIMITED
001	COLUMBIA COUNTY	1.5389		1.3161	0.2228
002	JAIL OPERATIONS - 3 YEAR LEVY	0.5797		0.5797	
010	COLUMBIA 4H & EXTENSION	0.0539		0.0539	
015	COL 9-1-1 COMM DISTR	0.2409		0.2409	
016	COL 911 LO LEVY	0.2900		0.2900	
111	COLUMBIA SWCD	0.0943		0.0943	
300	NW REGIONAL ESD	0.1451	0.1451		
320	RAINIER 13 SCHOOL	5.4360	5.4360		
802	CCDA - COLCO DEV AGENCY	0.1250		0.1250	
		8.5038	5.5811	2.6999	0.2228

CODE 0325

001	COLUMBIA COUNTY	1.5389		1.3161	0.2228
002	JAIL OPERATIONS - 3 YEAR LEVY	0.5797		0.5797	
010	COLUMBIA 4H & EXTENSION	0.0539		0.0539	
015	COL 9-1-1 COMM DISTR	0.2409		0.2409	
016	COL 911 LO LEVY	0.2900		0.2900	
020	COLUMBIA VECTOR	0.1195		0.1195	
050	CLATSKANIE PARK & REC	0.2372		0.2372	
055	CLATSKANIE LIBRARY	0.1954		0.1954	
060	PORT OF ST HELENS	0.0828		0.0828	
111	COLUMBIA SWCD	0.0943		0.0943	
300	NW REGIONAL ESD	0.1451	0.1451		
320	RAINIER 13 SCHOOL	5.4360	5.4360		
802	CCDA - COLCO DEV AGENCY	0.3417		0.3417	
		9.3554	5.5811	3.5515	0.2228

CODE 0326

ID	NAME	TOTAL	EDUCATION	GOVERNMENT	NON-LIMITED
001	COLUMBIA COUNTY	1.5389		1.3161	0.2228
002	JAIL OPERATIONS - 3 YEAR LEVY	0.5797		0.5797	
010	COLUMBIA 4H & EXTENSION	0.0539		0.0539	
015	COL 9-1-1 COMM DISTR	0.2409		0.2409	
016	COL 911 LO LEVY	0.2900		0.2900	
020	COLUMBIA VECTOR	0.1195		0.1195	
060	PORT OF ST HELENS	0.0828		0.0828	
111	COLUMBIA SWCD	0.0943		0.0943	
275	COLUMBIA RIVER FIRE	2.9731		2.9731	
300	NW REGIONAL ESD	0.1451	0.1451		
320	RAINIER 13 SCHOOL	5.4360	5.4360		
802	CCDA - COLCO DEV AGENCY	0.1392		0.1392	
		11.6934	5.5811	5.8895	0.2228

CODE 0328

ID	NAME	TOTAL	EDUCATION	GOVERNMENT	NON-LIMITED
001	COLUMBIA COUNTY	1.5389		1.3161	0.2228
002	JAIL OPERATIONS - 3 YEAR LEVY	0.5797		0.5797	
010	COLUMBIA 4H & EXTENSION	0.0539		0.0539	
015	COL 9-1-1 COMM DISTR	0.2409		0.2409	
016	COL 911 LO LEVY	0.2900		0.2900	
020	COLUMBIA VECTOR	0.1195		0.1195	
040	RAINIER CEMETERY	0.0553		0.0553	
060	PORT OF ST HELENS	0.0828		0.0828	
111	COLUMBIA SWCD	0.0943		0.0943	
275	COLUMBIA RIVER FIRE	2.9731		2.9731	
300	NW REGIONAL ESD	0.1451	0.1451		
320	RAINIER 13 SCHOOL	5.4360	5.4360		
390	PORTLAND COMM COLLEGE	0.2828	0.2828		
391	PORTLAND COMM COLLEGE	0.3957			0.3957
802	CCDA - COLCO DEV AGENCY	0.1548		0.1548	
		12.4428	5.8639	5.9604	0.6185

2016-17 Tax Rates by Code Area

CODE 0329					
ID	NAME	TOTAL	EDUCATION	GOVERNMENT	NON-LIMITED
001	COLUMBIA COUNTY	1.5389		1.3161	0.2228
002	JAIL OPERATIONS - 3 YEAR LEVY	0.5797		0.5797	
010	COLUMBIA 4H & EXTENSION	0.0539		0.0539	
015	COL 9-1-1 COMM DISTR	0.2409		0.2409	
016	COL 911 LO LEVY	0.2900		0.2900	
111	COLUMBIA SWCD	0.0943		0.0943	
300	NW REGIONAL ESD	0.1451	0.1451		
320	RAINIER 13 SCHOOL	5.4360	5.4360		
390	PORTLAND COMM COLLEGE	0.2828	0.2828		
391	PORTLAND COMM COLLEGE	0.3957			0.3957
802	CCDA - COLCO DEV AGENCY	0.1250		0.1250	
		9.1823	5.8639	2.6999	0.6185

CODE 0330					
ID	NAME	TOTAL	EDUCATION	GOVERNMENT	NON-LIMITED
001	COLUMBIA COUNTY	1.5389		1.3161	0.2228
002	JAIL OPERATIONS - 3 YEAR LEVY	0.5797		0.5797	
010	COLUMBIA 4H & EXTENSION	0.0539		0.0539	
015	COL 9-1-1 COMM DISTR	0.2409		0.2409	
016	COL 911 LO LEVY	0.2900		0.2900	
040	RAINIER CEMETERY	0.0553		0.0553	
111	COLUMBIA SWCD	0.0943		0.0943	
275	COLUMBIA RIVER FIRE	2.9731		2.9731	
300	NW REGIONAL ESD	0.1451	0.1451		
320	RAINIER 13 SCHOOL	5.4360	5.4360		
802	CCDA - COLCO DEV AGENCY	0.1406		0.1406	
		11.5478	5.5811	5.7439	0.2228

CODE 0391					
ID	NAME	TOTAL	EDUCATION	GOVERNMENT	NON-LIMITED
001	COLUMBIA COUNTY	1.4163		1.2112	0.2051
002	JAIL OPERATIONS - 3 YEAR LEVY	0.5797		0.5797	
010	COLUMBIA 4H & EXTENSION	0.0497		0.0497	
015	COL 9-1-1 COMM DISTR	0.2217		0.2217	
016	COL 911 LO LEVY	0.2900		0.2900	
020	COLUMBIA VECTOR	0.1099		0.1099	
040	RAINIER CEMETERY	0.0500		0.0500	
060	PORT OF ST HELENS	0.0762		0.0762	
111	COLUMBIA SWCD	0.0868		0.0868	
160	RAINIER CITY	7.2807		4.8350	2.4457
169	REDCO SPECIAL LEVY				
275	COLUMBIA RIVER FIRE	2.7477		2.7477	
300	NW REGIONAL ESD	0.1336	0.1336		
320	RAINIER 13 SCHOOL	5.0273	5.0273		
801	REDCO	1.3770		1.3770	
802	CCDA - COLCO DEV AGENCY	0.1548		0.1548	
		19.6014	5.1609	11.7897	2.6508

CODE 0395					
ID	NAME	TOTAL	EDUCATION	GOVERNMENT	NON-LIMITED
001	COLUMBIA COUNTY	1.4163		1.2112	0.2051
002	JAIL OPERATIONS - 3 YEAR LEVY	0.5797		0.5797	
010	COLUMBIA 4H & EXTENSION	0.0497		0.0497	
015	COL 9-1-1 COMM DISTR	0.2217		0.2217	
016	COL 911 LO LEVY	0.2900		0.2900	
020	COLUMBIA VECTOR	0.1099		0.1099	
040	RAINIER CEMETERY	0.0500		0.0500	
060	PORT OF ST HELENS	0.0762		0.0762	
111	COLUMBIA SWCD	0.0868		0.0868	
169	REDCO SPECIAL LEVY				
275	COLUMBIA RIVER FIRE	2.7477		2.7477	
300	NW REGIONAL ESD	0.1336	0.1336		
320	RAINIER 13 SCHOOL	5.0273	5.0273		
801	REDCO	0.8206		0.8206	
802	CCDA - COLCO DEV AGENCY	0.1548		0.1548	
		11.7643	5.1609	6.3983	0.2051

CODE 0399					
ID	NAME	TOTAL	EDUCATION	GOVERNMENT	NON-LIMITED
001	COLUMBIA COUNTY	1.4163		1.2112	0.2051
002	JAIL OPERATIONS - 3 YEAR LEVY	0.5797		0.5797	
010	COLUMBIA 4H & EXTENSION	0.0497		0.0497	
015	COL 9-1-1 COMM DISTR	0.2217		0.2217	
016	COL 911 LO LEVY	0.2900		0.2900	
020	COLUMBIA VECTOR	0.1099		0.1099	
040	RAINIER CEMETERY	0.0500		0.0500	
060	PORT OF ST HELENS	0.0762		0.0762	
111	COLUMBIA SWCD	0.0868		0.0868	
160	RAINIER CITY	7.2807		4.8350	2.4457
169	REDCO SPECIAL LEVY				
275	COLUMBIA RIVER FIRE	2.7477		2.7477	
300	NW REGIONAL ESD	0.1336	0.1336		
320	RAINIER 13 SCHOOL	5.0273	5.0273		
801	REDCO	1.3770		1.3770	
802	CCDA - COLCO DEV AGENCY	0.1548		0.1548	
		19.6014	5.1609	11.7897	2.6508

CODE 0401					
ID	NAME	TOTAL	EDUCATION	GOVERNMENT	NON-LIMITED
001	COLUMBIA COUNTY	1.5389		1.3161	0.2228
002	JAIL OPERATIONS - 3 YEAR LEVY	0.5797		0.5797	
010	COLUMBIA 4H & EXTENSION	0.0539		0.0539	
015	COL 9-1-1 COMM DISTR	0.2409		0.2409	
016	COL 911 LO LEVY	0.2900		0.2900	
111	COLUMBIA SWCD	0.0943		0.0943	
190	VERNONIA CITY	5.8163		5.8163	
290	VERNONIA RFPD	0.9535		0.9535	
291	VERNONIA RFPD LO LEVY	0.3200		0.3200	
300	NW REGIONAL ESD	0.1451	0.1451		
350	VERNONIA 47 JT SCHOOL	6.7104	5.0121		1.6983
390	PORTLAND COMM COLLEGE	0.2828	0.2828		
391	PORTLAND COMM COLLEGE	0.3957			0.3957
802	CCDA - COLCO DEV AGENCY	0.1250		0.1250	
		17.5465	5.4400	9.7897	2.3168

2016-17 Tax Rates by Code Area

CODE 0402					
ID	NAME	TOTAL	EDUCATION	GOVERNMENT	NON-LIMITED
001	COLUMBIA COUNTY	1.5389		1.3161	0.2228
002	JAIL OPERATIONS - 3 YEAR LEVY	0.5797		0.5797	
010	COLUMBIA 4H & EXTENSION	0.0539		0.0539	
015	COL 9-1-1 COMM DISTR	0.2409		0.2409	
016	COL 911 LO LEVY	0.2900		0.2900	
111	COLUMBIA SWCD	0.0943		0.0943	
300	NW REGIONAL ESD	0.1451	0.1451		
350	VERNONIA 47 JT SCHOOL	6.7104	5.0121		1.6983
390	PORTLAND COMM COLLEGE	0.2828	0.2828		
391	PORTLAND COMM COLLEGE	0.3957			0.3957
802	CCDA - COLCO DEV AGENCY	0.1250		0.1250	
		10.4567	5.4400	2.6999	2.3168

CODE 0403					
ID	NAME	TOTAL	EDUCATION	GOVERNMENT	NON-LIMITED
001	COLUMBIA COUNTY	1.5389		1.3161	0.2228
002	JAIL OPERATIONS - 3 YEAR LEVY	0.5797		0.5797	
010	COLUMBIA 4H & EXTENSION	0.0539		0.0539	
015	COL 9-1-1 COMM DISTR	0.2409		0.2409	
016	COL 911 LO LEVY	0.2900		0.2900	
111	COLUMBIA SWCD	0.0943		0.0943	
290	VERNONIA RFPD	0.9535		0.9535	
291	VERNONIA RFPD LO LEVY	0.3200		0.3200	
300	NW REGIONAL ESD	0.1451	0.1451		
350	VERNONIA 47 JT SCHOOL	6.7104	5.0121		1.6983
390	PORTLAND COMM COLLEGE	0.2828	0.2828		
391	PORTLAND COMM COLLEGE	0.3957			0.3957
802	CCDA - COLCO DEV AGENCY	0.1250		0.1250	
		11.7302	5.4400	3.9734	2.3168

CODE 0404					
ID	NAME	TOTAL	EDUCATION	GOVERNMENT	NON-LIMITED
001	COLUMBIA COUNTY	1.5389		1.3161	0.2228
002	JAIL OPERATIONS - 3 YEAR LEVY	0.5797		0.5797	
010	COLUMBIA 4H & EXTENSION	0.0539		0.0539	
015	COL 9-1-1 COMM DISTR	0.2409		0.2409	
016	COL 911 LO LEVY	0.2900		0.2900	
111	COLUMBIA SWCD	0.0943		0.0943	
240	MIST-BIRKENFELD JT RFPD	2.0875		2.0875	
300	NW REGIONAL ESD	0.1451	0.1451		
350	VERNONIA 47 JT SCHOOL	6.7104	5.0121		1.6983
390	PORTLAND COMM COLLEGE	0.2828	0.2828		
391	PORTLAND COMM COLLEGE	0.3957			0.3957
802	CCDA - COLCO DEV AGENCY	0.1250		0.1250	
		12.5442	5.4400	4.7874	2.3168

CODE 0405					
ID	NAME	TOTAL	EDUCATION	GOVERNMENT	NON-LIMITED
001	COLUMBIA COUNTY	1.5389		1.3161	0.2228
002	JAIL OPERATIONS - 3 YEAR LEVY	0.5797		0.5797	
010	COLUMBIA 4H & EXTENSION	0.0539		0.0539	
015	COL 9-1-1 COMM DISTR	0.2409		0.2409	
016	COL 911 LO LEVY	0.2900		0.2900	
111	COLUMBIA SWCD	0.0943		0.0943	
300	NW REGIONAL ESD	0.1451	0.1451		
350	VERNONIA 47 JT SCHOOL	6.7104	5.0121		1.6983
390	PORTLAND COMM COLLEGE	0.2828	0.2828		
391	PORTLAND COMM COLLEGE	0.3957			0.3957
802	CCDA - COLCO DEV AGENCY	0.1250		0.1250	
		10.4567	5.4400	2.6999	2.3168

CODE 0501					
ID	NAME	TOTAL	EDUCATION	GOVERNMENT	NON-LIMITED
001	COLUMBIA COUNTY	1.5389		1.3161	0.2228
002	JAIL OPERATIONS - 3 YEAR LEVY	0.5797		0.5797	
010	COLUMBIA 4H & EXTENSION	0.0539		0.0539	
015	COL 9-1-1 COMM DISTR	0.2409		0.2409	
016	COL 911 LO LEVY	0.2900		0.2900	
020	COLUMBIA VECTOR	0.1195		0.1195	
040	RAINIER CEMETERY	0.0553		0.0553	
050	CLATSKANIE PARK & REC	0.2372		0.2372	
055	CLATSKANIE LIBRARY	0.1954		0.1954	
060	PORT OF ST HELENS	0.0828		0.0828	
110	CLATSKANIE CITY	6.2088		6.2088	
111	COLUMBIA SWCD	0.0943		0.0943	
220	CLATSKANIE RFPD	1.1483		1.1483	
221	CLATSKANIE RFPD LO LEVY	1.2533		1.2533	
300	NW REGIONAL ESD	0.1451	0.1451		
340	CLATSKANIE 6J SCHOOL	3.4766	2.8812		0.5954
802	CCDA - COLCO DEV AGENCY	3.0102		3.0102	
		18.7302	3.0263	14.8857	0.8182

CODE 0502					
ID	NAME	TOTAL	EDUCATION	GOVERNMENT	NON-LIMITED
001	COLUMBIA COUNTY	1.5389		1.3161	0.2228
002	JAIL OPERATIONS - 3 YEAR LEVY	0.5797		0.5797	
010	COLUMBIA 4H & EXTENSION	0.0539		0.0539	
015	COL 9-1-1 COMM DISTR	0.2409		0.2409	
016	COL 911 LO LEVY	0.2900		0.2900	
020	COLUMBIA VECTOR	0.1195		0.1195	
050	CLATSKANIE PARK & REC	0.2372		0.2372	
055	CLATSKANIE LIBRARY	0.1954		0.1954	
060	PORT OF ST HELENS	0.0828		0.0828	
111	COLUMBIA SWCD	0.0943		0.0943	
220	CLATSKANIE RFPD	1.1483		1.1483	
221	CLATSKANIE RFPD LO LEVY	1.2533		1.2533	
300	NW REGIONAL ESD	0.1451	0.1451		
340	CLATSKANIE 6J SCHOOL	3.4766	2.8812		0.5954
802	CCDA - COLCO DEV AGENCY	2.9946		2.9946	
		12.4505	3.0263	8.6060	0.8182

2016-17 Tax Rates by Code Area

CODE 0503					
ID	NAME	TOTAL	EDUCATION	GOVERNMENT	NON-LIMITED
001	COLUMBIA COUNTY	1.5389		1.3161	0.2228
002	JAIL OPERATIONS - 3 YEAR LEVY	0.5797		0.5797	
010	COLUMBIA 4H & EXTENSION	0.0539		0.0539	
015	COL 9-1-1 COMM DISTR	0.2409		0.2409	
016	COL 911 LO LEVY	0.2900		0.2900	
111	COLUMBIA SWCD	0.0943		0.0943	
220	CLATSKANIE RFPD	1.1483		1.1483	
221	CLATSKANIE RFPD LO LEVY	1.2533		1.2533	
300	NW REGIONAL ESD	0.1451	0.1451		
340	CLATSKANIE 6J SCHOOL	3.4766	2.8812		0.5954
802	CCDA - COLCO DEV AGENCY	2.7779		2.7779	
		11.5989	3.0263	7.7544	0.8182

CODE 0504					
ID	NAME	TOTAL	EDUCATION	GOVERNMENT	NON-LIMITED
001	COLUMBIA COUNTY	1.5389		1.3161	0.2228
002	JAIL OPERATIONS - 3 YEAR LEVY	0.5797		0.5797	
010	COLUMBIA 4H & EXTENSION	0.0539		0.0539	
015	COL 9-1-1 COMM DISTR	0.2409		0.2409	
016	COL 911 LO LEVY	0.2900		0.2900	
111	COLUMBIA SWCD	0.0943		0.0943	
220	CLATSKANIE RFPD	1.1483		1.1483	
221	CLATSKANIE RFPD LO LEVY	1.2533		1.2533	
300	NW REGIONAL ESD	0.1451	0.1451		
340	CLATSKANIE 6J SCHOOL	3.4766	2.8812		0.5954
802	CCDA - COLCO DEV AGENCY	2.7779		2.7779	
		11.5989	3.0263	7.7544	0.8182

CODE 0505					
ID	NAME	TOTAL	EDUCATION	GOVERNMENT	NON-LIMITED
001	COLUMBIA COUNTY	1.5389		1.3161	0.2228
002	JAIL OPERATIONS - 3 YEAR LEVY	0.5797		0.5797	
010	COLUMBIA 4H & EXTENSION	0.0539		0.0539	
015	COL 9-1-1 COMM DISTR	0.2409		0.2409	
016	COL 911 LO LEVY	0.2900		0.2900	
020	COLUMBIA VECTOR	0.1195		0.1195	
050	CLATSKANIE PARK & REC	0.2372		0.2372	
055	CLATSKANIE LIBRARY	0.1954		0.1954	
060	PORT OF ST HELENS	0.0828		0.0828	
111	COLUMBIA SWCD	0.0943		0.0943	
300	NW REGIONAL ESD	0.1451	0.1451		
340	CLATSKANIE 6J SCHOOL	3.4766	2.8812		0.5954
802	CCDA - COLCO DEV AGENCY	2.4231		2.4231	
		9.4774	3.0263	5.6329	0.8182

CODE 0506					
ID	NAME	TOTAL	EDUCATION	GOVERNMENT	NON-LIMITED
001	COLUMBIA COUNTY	1.5389		1.3161	0.2228
002	JAIL OPERATIONS - 3 YEAR LEVY	0.5797		0.5797	
010	COLUMBIA 4H & EXTENSION	0.0539		0.0539	
015	COL 9-1-1 COMM DISTR	0.2409		0.2409	
016	COL 911 LO LEVY	0.2900		0.2900	
050	CLATSKANIE PARK & REC	0.2372		0.2372	
055	CLATSKANIE LIBRARY	0.1954		0.1954	
111	COLUMBIA SWCD	0.0943		0.0943	
220	CLATSKANIE RFPD	1.1483		1.1483	
221	CLATSKANIE RFPD LO LEVY	1.2533		1.2533	
300	NW REGIONAL ESD	0.1451	0.1451		
340	CLATSKANIE 6J SCHOOL	3.4766	2.8812		0.5954
802	CCDA - COLCO DEV AGENCY	2.9804		2.9804	
		12.2340	3.0263	8.3895	0.8182

CODE 0508					
ID	NAME	TOTAL	EDUCATION	GOVERNMENT	NON-LIMITED
001	COLUMBIA COUNTY	1.5389		1.3161	0.2228
002	JAIL OPERATIONS - 3 YEAR LEVY	0.5797		0.5797	
010	COLUMBIA 4H & EXTENSION	0.0539		0.0539	
015	COL 9-1-1 COMM DISTR	0.2409		0.2409	
016	COL 911 LO LEVY	0.2900		0.2900	
020	COLUMBIA VECTOR	0.1195		0.1195	
050	CLATSKANIE PARK & REC	0.2372		0.2372	
055	CLATSKANIE LIBRARY	0.1954		0.1954	
060	PORT OF ST HELENS	0.0828		0.0828	
111	COLUMBIA SWCD	0.0943		0.0943	
220	CLATSKANIE RFPD	1.1483		1.1483	
221	CLATSKANIE RFPD LO LEVY	1.2533		1.2533	
300	NW REGIONAL ESD	0.1451	0.1451		
340	CLATSKANIE 6J SCHOOL	3.4766	2.8812		0.5954
802	CCDA - COLCO DEV AGENCY	2.9946		2.9946	
		12.4505	3.0263	8.6060	0.8182

CODE 0509					
ID	NAME	TOTAL	EDUCATION	GOVERNMENT	NON-LIMITED
001	COLUMBIA COUNTY	1.5389		1.3161	0.2228
002	JAIL OPERATIONS - 3 YEAR LEVY	0.5797		0.5797	
010	COLUMBIA 4H & EXTENSION	0.0539		0.0539	
015	COL 9-1-1 COMM DISTR	0.2409		0.2409	
016	COL 911 LO LEVY	0.2900		0.2900	
020	COLUMBIA VECTOR	0.1195		0.1195	
050	CLATSKANIE PARK & REC	0.2372		0.2372	
055	CLATSKANIE LIBRARY	0.1954		0.1954	
060	PORT OF ST HELENS	0.0828		0.0828	
111	COLUMBIA SWCD	0.0943		0.0943	
300	NW REGIONAL ESD	0.1451	0.1451		
340	CLATSKANIE 6J SCHOOL	3.4766	2.8812		0.5954
802	CCDA - COLCO DEV AGENCY	2.4231		2.4231	
		9.4774	3.0263	5.6329	0.8182

2016-17 Tax Rates by Code Area

CODE 0510					
ID	NAME	TOTAL	EDUCATION	GOVERNMENT	NON-LIMITED
001	COLUMBIA COUNTY	1.5389		1.3161	0.2228
002	JAIL OPERATIONS - 3 YEAR LEVY	0.5797		0.5797	
010	COLUMBIA 4H & EXTENSION	0.0539		0.0539	
015	COL 9-1-1 COMM DISTR	0.2409		0.2409	
016	COL 911 LO LEVY	0.2900		0.2900	
020	COLUMBIA VECTOR	0.1195		0.1195	
040	RAINIER CEMETERY	0.0553		0.0553	
050	CLATSKANIE PARK & REC	0.2372		0.2372	
055	CLATSKANIE LIBRARY	0.1954		0.1954	
060	PORT OF ST HELENS	0.0828		0.0828	
111	COLUMBIA SWCD	0.0943		0.0943	
220	CLATSKANIE RFPD	1.1483		1.1483	
221	CLATSKANIE RFPD LO LEVY	1.2533		1.2533	
300	NW REGIONAL ESD	0.1451	0.1451		
340	CLATSKANIE 6J SCHOOL	3.4766	2.8812		0.5954
802	CCDA - COLCO DEV AGENCY	3.0102		3.0102	
		12.5214	3.0263	8.6769	0.8182

CODE 0511					
ID	NAME	TOTAL	EDUCATION	GOVERNMENT	NON-LIMITED
001	COLUMBIA COUNTY	1.5389		1.3161	0.2228
002	JAIL OPERATIONS - 3 YEAR LEVY	0.5797		0.5797	
010	COLUMBIA 4H & EXTENSION	0.0539		0.0539	
015	COL 9-1-1 COMM DISTR	0.2409		0.2409	
016	COL 911 LO LEVY	0.2900		0.2900	
111	COLUMBIA SWCD	0.0943		0.0943	
220	CLATSKANIE RFPD	1.1483		1.1483	
221	CLATSKANIE RFPD LO LEVY	1.2533		1.2533	
300	NW REGIONAL ESD	0.1451	0.1451		
340	CLATSKANIE 6J SCHOOL	3.4766	2.8812		0.5954
802	CCDA - COLCO DEV AGENCY	2.7779		2.7779	
		11.5989	3.0263	7.7544	0.8182

CODE 0590					
ID	NAME	TOTAL	EDUCATION	GOVERNMENT	NON-LIMITED
001	COLUMBIA COUNTY	1.5389		1.3161	0.2228
002	JAIL OPERATIONS - 3 YEAR LEVY	0.5797		0.5797	
010	COLUMBIA 4H & EXTENSION	0.0539		0.0539	
015	COL 9-1-1 COMM DISTR	0.2409		0.2409	
016	COL 911 LO LEVY	0.2900		0.2900	
020	COLUMBIA VECTOR	0.1195		0.1195	
040	RAINIER CEMETERY	0.0553		0.0553	
050	CLATSKANIE PARK & REC	0.2372		0.2372	
055	CLATSKANIE LIBRARY	0.1954		0.1954	
060	PORT OF ST HELENS	0.0828		0.0828	
111	COLUMBIA SWCD	0.0943		0.0943	
220	CLATSKANIE RFPD	1.1483		1.1483	
221	CLATSKANIE RFPD LO LEVY	1.2533		1.2533	
300	NW REGIONAL ESD	0.1451	0.1451		
340	CLATSKANIE 6J SCHOOL	3.4766	2.8812		0.5954
802	CCDA - COLCO DEV AGENCY	3.0102		3.0102	
		12.5214	3.0263	8.6769	0.8182

CODE 0591					
ID	NAME	TOTAL	EDUCATION	GOVERNMENT	NON-LIMITED
001	COLUMBIA COUNTY	1.5389		1.3161	0.2228
002	JAIL OPERATIONS - 3 YEAR LEVY	0.5797		0.5797	
010	COLUMBIA 4H & EXTENSION	0.0539		0.0539	
015	COL 9-1-1 COMM DISTR	0.2409		0.2409	
016	COL 911 LO LEVY	0.2900		0.2900	
020	COLUMBIA VECTOR	0.1195		0.1195	
040	RAINIER CEMETERY	0.0553		0.0553	
050	CLATSKANIE PARK & REC	0.2372		0.2372	
055	CLATSKANIE LIBRARY	0.1954		0.1954	
060	PORT OF ST HELENS	0.0828		0.0828	
110	CLATSKANIE CITY	6.2088		6.2088	
111	COLUMBIA SWCD	0.0943		0.0943	
220	CLATSKANIE RFPD	1.1483		1.1483	
221	CLATSKANIE RFPD LO LEVY	1.2533		1.2533	
300	NW REGIONAL ESD	0.1451	0.1451		
340	CLATSKANIE 6J SCHOOL	3.4766	2.8812		0.5954
802	CCDA - COLCO DEV AGENCY	3.0102		3.0102	
		18.7302	3.0263	14.8857	0.8182

CODE 0598					
ID	NAME	TOTAL	EDUCATION	GOVERNMENT	NON-LIMITED
001	COLUMBIA COUNTY	1.5389		1.3161	0.2228
002	JAIL OPERATIONS - 3 YEAR LEVY	0.5797		0.5797	
010	COLUMBIA 4H & EXTENSION	0.0539		0.0539	
015	COL 9-1-1 COMM DISTR	0.2409		0.2409	
016	COL 911 LO LEVY	0.2900		0.2900	
020	COLUMBIA VECTOR	0.1195		0.1195	
050	CLATSKANIE PARK & REC	0.2372		0.2372	
055	CLATSKANIE LIBRARY	0.1954		0.1954	
060	PORT OF ST HELENS	0.0828		0.0828	
111	COLUMBIA SWCD	0.0943		0.0943	
220	CLATSKANIE RFPD	1.1483		1.1483	
221	CLATSKANIE RFPD LO LEVY	1.2533		1.2533	
300	NW REGIONAL ESD	0.1451	0.1451		
340	CLATSKANIE 6J SCHOOL	3.4766	2.8812		0.5954
802	CCDA - COLCO DEV AGENCY	2.9946		2.9946	
		12.4505	3.0263	8.6060	0.8182

2016-17 Tax Rates by Code Area

CODE 9101					
ID	NAME	TOTAL	EDUCATION	GOVERNMENT	NON-LIMITED
001	COLUMBIA COUNTY	1.5389		1.3161	0.2228
002	JAIL OPERATIONS - 3 YEAR LEVY	0.5797		0.5797	
010	COLUMBIA 4H & EXTENSION	0.0539		0.0539	
015	COL 9-1-1 COMM DISTR	0.2409		0.2409	
016	COL 911 LO LEVY	0.2900		0.2900	
020	COLUMBIA VECTOR	0.1195		0.1195	
060	PORT OF ST HELENS	0.0828		0.0828	
100	SCAPPOOSE LIBRARY	0.2536		0.2536	
111	COLUMBIA SWCD	0.0943		0.0943	
170	SCAPPOOSE CITY	3.3025		3.2268	0.0757
300	NW REGIONAL ESD	0.1451	0.1451		
330	SCAPPOOSE 1 JT SCHOOL	6.9002	4.9725		1.9277
390	PORTLAND COMM COLLEGE	0.2828	0.2828		
391	PORTLAND COMM COLLEGE	0.3957			0.3957
802	CCDA - COLCO DEV AGENCY	0.1392		0.1392	
		14.4191	5.4004	6.3968	2.6219

CODE 9108					
ID	NAME	TOTAL	EDUCATION	GOVERNMENT	NON-LIMITED
001	COLUMBIA COUNTY	1.5389		1.3161	0.2228
002	JAIL OPERATIONS - 3 YEAR LEVY	0.5797		0.5797	
010	COLUMBIA 4H & EXTENSION	0.0539		0.0539	
015	COL 9-1-1 COMM DISTR	0.2409		0.2409	
016	COL 911 LO LEVY	0.2900		0.2900	
020	COLUMBIA VECTOR	0.1195		0.1195	
060	PORT OF ST HELENS	0.0828		0.0828	
100	SCAPPOOSE LIBRARY	0.2536		0.2536	
111	COLUMBIA SWCD	0.0943		0.0943	
300	NW REGIONAL ESD	0.1451	0.1451		
330	SCAPPOOSE 1 JT SCHOOL	6.9002	4.9725		1.9277
390	PORTLAND COMM COLLEGE	0.2828	0.2828		
391	PORTLAND COMM COLLEGE	0.3957			0.3957
802	CCDA - COLCO DEV AGENCY	0.1392		0.1392	
		11.1166	5.4004	3.1700	2.5462

CODE 9109					
ID	NAME	TOTAL	EDUCATION	GOVERNMENT	NON-LIMITED
001	COLUMBIA COUNTY	1.5389		1.3161	0.2228
002	JAIL OPERATIONS - 3 YEAR LEVY	0.5797		0.5797	
010	COLUMBIA 4H & EXTENSION	0.0539		0.0539	
015	COL 9-1-1 COMM DISTR	0.2409		0.2409	
016	COL 911 LO LEVY	0.2900		0.2900	
020	COLUMBIA VECTOR	0.1195		0.1195	
060	PORT OF ST HELENS	0.0828		0.0828	
100	SCAPPOOSE LIBRARY	0.2536		0.2536	
111	COLUMBIA SWCD	0.0943		0.0943	
300	NW REGIONAL ESD	0.1451	0.1451		
330	SCAPPOOSE 1 JT SCHOOL	6.9002	4.9725		1.9277
390	PORTLAND COMM COLLEGE	0.2828	0.2828		
391	PORTLAND COMM COLLEGE	0.3957			0.3957
802	CCDA - COLCO DEV AGENCY	0.1392		0.1392	
		11.1166	5.4004	3.1700	2.5462

CODE 9110					
ID	NAME	TOTAL	EDUCATION	GOVERNMENT	NON-LIMITED
001	COLUMBIA COUNTY	1.5389		1.3161	0.2228
002	JAIL OPERATIONS - 3 YEAR LEVY	0.5797		0.5797	
010	COLUMBIA 4H & EXTENSION	0.0539		0.0539	
015	COL 9-1-1 COMM DISTR	0.2409		0.2409	
016	COL 911 LO LEVY	0.2900		0.2900	
020	COLUMBIA VECTOR	0.1195		0.1195	
060	PORT OF ST HELENS	0.0828		0.0828	
111	COLUMBIA SWCD	0.0943		0.0943	
300	NW REGIONAL ESD	0.1451	0.1451		
330	SCAPPOOSE 1 JT SCHOOL	6.9002	4.9725		1.9277
390	PORTLAND COMM COLLEGE	0.2828	0.2828		
391	PORTLAND COMM COLLEGE	0.3957			0.3957
802	CCDA - COLCO DEV AGENCY	0.1392		0.1392	
		10.8630	5.4004	2.9164	2.5462

CODE 9111					
ID	NAME	TOTAL	EDUCATION	GOVERNMENT	NON-LIMITED
001	COLUMBIA COUNTY	1.5389		1.3161	0.2228
002	JAIL OPERATIONS - 3 YEAR LEVY	0.5797		0.5797	
010	COLUMBIA 4H & EXTENSION	0.0539		0.0539	
015	COL 9-1-1 COMM DISTR	0.2409		0.2409	
016	COL 911 LO LEVY	0.2900		0.2900	
020	COLUMBIA VECTOR	0.1195		0.1195	
060	PORT OF ST HELENS	0.0828		0.0828	
111	COLUMBIA SWCD	0.0943		0.0943	
300	NW REGIONAL ESD	0.1451	0.1451		
330	SCAPPOOSE 1 JT SCHOOL	6.9002	4.9725		1.9277
390	PORTLAND COMM COLLEGE	0.2828	0.2828		
391	PORTLAND COMM COLLEGE	0.3957			0.3957
802	CCDA - COLCO DEV AGENCY	0.1392		0.1392	
		10.8630	5.4004	2.9164	2.5462

CODE 9201					
ID	NAME	TOTAL	EDUCATION	GOVERNMENT	NON-LIMITED
001	COLUMBIA COUNTY	1.5389		1.3161	0.2228
002	JAIL OPERATIONS - 3 YEAR LEVY	0.5797		0.5797	
010	COLUMBIA 4H & EXTENSION	0.0539		0.0539	
015	COL 9-1-1 COMM DISTR	0.2409		0.2409	
016	COL 911 LO LEVY	0.2900		0.2900	
020	COLUMBIA VECTOR	0.1195		0.1195	
025	GTR ST HELENS PK & REC	0.2347		0.2347	
060	PORT OF ST HELENS	0.0828		0.0828	
111	COLUMBIA SWCD	0.0943		0.0943	
175	ST HELENS CITY	1.9078		1.9078	
300	NW REGIONAL ESD	0.1451	0.1451		
310	ST HELENS 502 SCHOOL	6.3733	5.0297		1.3436
390	PORTLAND COMM COLLEGE	0.2828	0.2828		
391	PORTLAND COMM COLLEGE	0.3957			0.3957
802	CCDA - COLCO DEV AGENCY	0.1392		0.1392	
		12.4786	5.4576	5.0589	1.9621

2016-17 Tax Rates by Code Area

CODE 9203					
ID	NAME	TOTAL	EDUCATION	GOVERNMENT	NON-LIMITED
001	COLUMBIA COUNTY	1.5389		1.3161	0.2228
002	JAIL OPERATIONS - 3 YEAR LEVY	0.5797		0.5797	
010	COLUMBIA 4H & EXTENSION	0.0539		0.0539	
015	COL 9-1-1 COMM DISTR	0.2409		0.2409	
016	COL 911 LO LEVY	0.2900		0.2900	
020	COLUMBIA VECTOR	0.1195		0.1195	
025	GTR ST HELENS PK & REC	0.2347		0.2347	
060	PORT OF ST HELENS	0.0828		0.0828	
111	COLUMBIA SWCD	0.0943		0.0943	
115	CITY COLUMBIA CITY	1.8046		1.8046	
300	NW REGIONAL ESD	0.1451	0.1451		
310	ST HELENS 502 SCHOOL	6.3733	5.0297		1.3436
390	PORTLAND COMM COLLEGE	0.2828	0.2828		
391	PORTLAND COMM COLLEGE	0.3957			0.3957
802	CCDA - COLCO DEV AGENCY	0.1392		0.1392	
		12.3754	5.4576	4.9557	1.9621

CODE 9208					
ID	NAME	TOTAL	EDUCATION	GOVERNMENT	NON-LIMITED
001	COLUMBIA COUNTY	1.5389		1.3161	0.2228
002	JAIL OPERATIONS - 3 YEAR LEVY	0.5797		0.5797	
010	COLUMBIA 4H & EXTENSION	0.0539		0.0539	
015	COL 9-1-1 COMM DISTR	0.2409		0.2409	
016	COL 911 LO LEVY	0.2900		0.2900	
020	COLUMBIA VECTOR	0.1195		0.1195	
025	GTR ST HELENS PK & REC	0.2347		0.2347	
060	PORT OF ST HELENS	0.0828		0.0828	
111	COLUMBIA SWCD	0.0943		0.0943	
300	NW REGIONAL ESD	0.1451	0.1451		
310	ST HELENS 502 SCHOOL	6.3733	5.0297		1.3436
390	PORTLAND COMM COLLEGE	0.2828	0.2828		
391	PORTLAND COMM COLLEGE	0.3957			0.3957
802	CCDA - COLCO DEV AGENCY	0.1392		0.1392	
		10.5708	5.4576	3.1511	1.9621

CODE 9209					
ID	NAME	TOTAL	EDUCATION	GOVERNMENT	NON-LIMITED
001	COLUMBIA COUNTY	1.5389		1.3161	0.2228
002	JAIL OPERATIONS - 3 YEAR LEVY	0.5797		0.5797	
010	COLUMBIA 4H & EXTENSION	0.0539		0.0539	
015	COL 9-1-1 COMM DISTR	0.2409		0.2409	
016	COL 911 LO LEVY	0.2900		0.2900	
020	COLUMBIA VECTOR	0.1195		0.1195	
025	GTR ST HELENS PK & REC	0.2347		0.2347	
040	RAINIER CEMETERY	0.0553		0.0553	
060	PORT OF ST HELENS	0.0828		0.0828	
111	COLUMBIA SWCD	0.0943		0.0943	
300	NW REGIONAL ESD	0.1451	0.1451		
310	ST HELENS 502 SCHOOL	6.3733	5.0297		1.3436
390	PORTLAND COMM COLLEGE	0.2828	0.2828		
391	PORTLAND COMM COLLEGE	0.3957			0.3957
802	CCDA - COLCO DEV AGENCY	0.1548		0.1548	
		10.6417	5.4576	3.2220	1.9621

CODE 9211

ID	NAME	TOTAL	EDUCATION	GOVERNMENT	NON-LIMITED
001	COLUMBIA COUNTY	1.5389		1.3161	0.2228
002	JAIL OPERATIONS - 3 YEAR LEVY	0.5797		0.5797	
010	COLUMBIA 4H & EXTENSION	0.0539		0.0539	
015	COL 9-1-1 COMM DISTR	0.2409		0.2409	
016	COL 911 LO LEVY	0.2900		0.2900	
020	COLUMBIA VECTOR	0.1195		0.1195	
025	GTR ST HELENS PK & REC	0.2347		0.2347	
060	PORT OF ST HELENS	0.0828		0.0828	
111	COLUMBIA SWCD	0.0943		0.0943	
300	NW REGIONAL ESD	0.1451	0.1451		
310	ST HELENS 502 SCHOOL	6.3733	5.0297		1.3436
390	PORTLAND COMM COLLEGE	0.2828	0.2828		
391	PORTLAND COMM COLLEGE	0.3957			0.3957
802	CCDA - COLCO DEV AGENCY	0.1392		0.1392	
		10.5708	5.4576	3.1511	1.9621

CODE 9212

ID	NAME	TOTAL	EDUCATION	GOVERNMENT	NON-LIMITED
001	COLUMBIA COUNTY	1.5389		1.3161	0.2228
002	JAIL OPERATIONS - 3 YEAR LEVY	0.5797		0.5797	
010	COLUMBIA 4H & EXTENSION	0.0539		0.0539	
015	COL 9-1-1 COMM DISTR	0.2409		0.2409	
016	COL 911 LO LEVY	0.2900		0.2900	
020	COLUMBIA VECTOR	0.1195		0.1195	
060	PORT OF ST HELENS	0.0828		0.0828	
111	COLUMBIA SWCD	0.0943		0.0943	
300	NW REGIONAL ESD	0.1451	0.1451		
310	ST HELENS 502 SCHOOL	6.3733	5.0297		1.3436
390	PORTLAND COMM COLLEGE	0.2828	0.2828		
391	PORTLAND COMM COLLEGE	0.3957			0.3957
802	CCDA - COLCO DEV AGENCY	0.1392		0.1392	
		10.3361	5.4576	2.9164	1.9621

CODE 9213

ID	NAME	TOTAL	EDUCATION	GOVERNMENT	NON-LIMITED
001	COLUMBIA COUNTY	1.5389		1.3161	0.2228
002	JAIL OPERATIONS - 3 YEAR LEVY	0.5797		0.5797	
010	COLUMBIA 4H & EXTENSION	0.0539		0.0539	
015	COL 9-1-1 COMM DISTR	0.2409		0.2409	
016	COL 911 LO LEVY	0.2900		0.2900	
020	COLUMBIA VECTOR	0.1195		0.1195	
060	PORT OF ST HELENS	0.0828		0.0828	
111	COLUMBIA SWCD	0.0943		0.0943	
300	NW REGIONAL ESD	0.1451	0.1451		
310	ST HELENS 502 SCHOOL	6.3733	5.0297		1.3436
390	PORTLAND COMM COLLEGE	0.2828	0.2828		
391	PORTLAND COMM COLLEGE	0.3957			0.3957
802	CCDA - COLCO DEV AGENCY	0.1392		0.1392	
		10.3361	5.4576	2.9164	1.9621

2016-17 Tax Rates by Code Area

CODE 9301					
ID	NAME	TOTAL	EDUCATION	GOVERNMENT	NON-LIMITED
001	COLUMBIA COUNTY	1.4163		1.2112	0.2051
002	JAIL OPERATIONS - 3 YEAR LEVY	0.5797		0.5797	
010	COLUMBIA 4H & EXTENSION	0.0497		0.0497	
015	COL 9-1-1 COMM DISTR	0.2217		0.2217	
016	COL 911 LO LEVY	0.2900		0.2900	
020	COLUMBIA VECTOR	0.1099		0.1099	
040	RAINIER CEMETERY	0.0500		0.0500	
060	PORT OF ST HELENS	0.0762		0.0762	
111	COLUMBIA SWCD	0.0868		0.0868	
160	RAINIER CITY	7.2807		4.8350	2.4457
169	REDCO SPECIAL LEVY				
300	NW REGIONAL ESD	0.1336	0.1336		
320	RAINIER 13 SCHOOL	5.0273	5.0273		
801	REDCO	1.1516		1.1516	
802	CCDA - COLCO DEV AGENCY	0.1548		0.1548	
		16.6283	5.1609	8.8166	2.6508

CODE 9302					
ID	NAME	TOTAL	EDUCATION	GOVERNMENT	NON-LIMITED
001	COLUMBIA COUNTY	1.5389		1.3161	0.2228
002	JAIL OPERATIONS - 3 YEAR LEVY	0.5797		0.5797	
010	COLUMBIA 4H & EXTENSION	0.0539		0.0539	
015	COL 9-1-1 COMM DISTR	0.2409		0.2409	
016	COL 911 LO LEVY	0.2900		0.2900	
020	COLUMBIA VECTOR	0.1195		0.1195	
040	RAINIER CEMETERY	0.0553		0.0553	
060	PORT OF ST HELENS	0.0828		0.0828	
111	COLUMBIA SWCD	0.0943		0.0943	
150	PRESCOTT CITY	2.4586		2.4586	
300	NW REGIONAL ESD	0.1451	0.1451		
320	RAINIER 13 SCHOOL	5.4360	5.4360		
802	CCDA - COLCO DEV AGENCY	0.1548		0.1548	
		11.2498	5.5811	5.4459	0.2228

CODE 9305					
ID	NAME	TOTAL	EDUCATION	GOVERNMENT	NON-LIMITED
001	COLUMBIA COUNTY	1.5389		1.3161	0.2228
002	JAIL OPERATIONS - 3 YEAR LEVY	0.5797		0.5797	
010	COLUMBIA 4H & EXTENSION	0.0539		0.0539	
015	COL 9-1-1 COMM DISTR	0.2409		0.2409	
016	COL 911 LO LEVY	0.2900		0.2900	
020	COLUMBIA VECTOR	0.1195		0.1195	
040	RAINIER CEMETERY	0.0553		0.0553	
060	PORT OF ST HELENS	0.0828		0.0828	
111	COLUMBIA SWCD	0.0943		0.0943	
300	NW REGIONAL ESD	0.1451	0.1451		
320	RAINIER 13 SCHOOL	5.4360	5.4360		
802	CCDA - COLCO DEV AGENCY	0.1548		0.1548	
		8.7912	5.5811	2.9873	0.2228

CODE 9306

ID	NAME	TOTAL	EDUCATION	GOVERNMENT	NON-LIMITED
001	COLUMBIA COUNTY	1.5389		1.3161	0.2228
002	JAIL OPERATIONS - 3 YEAR LEVY	0.5797		0.5797	
010	COLUMBIA 4H & EXTENSION	0.0539		0.0539	
015	COL 9-1-1 COMM DISTR	0.2409		0.2409	
016	COL 911 LO LEVY	0.2900		0.2900	
020	COLUMBIA VECTOR	0.1195		0.1195	
040	RAINIER CEMETERY	0.0553		0.0553	
050	CLATSKANIE PARK & REC	0.2372		0.2372	
055	CLATSKANIE LIBRARY	0.1954		0.1954	
060	PORT OF ST HELENS	0.0828		0.0828	
111	COLUMBIA SWCD	0.0943		0.0943	
300	NW REGIONAL ESD	0.1451	0.1451		
320	RAINIER 13 SCHOOL	5.4360	5.4360		
802	CCDA - COLCO DEV AGENCY	0.3573		0.3573	
		9.4263	5.5811	3.6224	0.2228

CODE 9308

ID	NAME	TOTAL	EDUCATION	GOVERNMENT	NON-LIMITED
001	COLUMBIA COUNTY	1.5389		1.3161	0.2228
002	JAIL OPERATIONS - 3 YEAR LEVY	0.5797		0.5797	
010	COLUMBIA 4H & EXTENSION	0.0539		0.0539	
015	COL 9-1-1 COMM DISTR	0.2409		0.2409	
016	COL 911 LO LEVY	0.2900		0.2900	
020	COLUMBIA VECTOR	0.1195		0.1195	
040	RAINIER CEMETERY	0.0553		0.0553	
050	CLATSKANIE PARK & REC	0.2372		0.2372	
055	CLATSKANIE LIBRARY	0.1954		0.1954	
060	PORT OF ST HELENS	0.0828		0.0828	
111	COLUMBIA SWCD	0.0943		0.0943	
300	NW REGIONAL ESD	0.1451	0.1451		
320	RAINIER 13 SCHOOL	5.4360	5.4360		
802	CCDA - COLCO DEV AGENCY	0.3573		0.3573	
		9.4263	5.5811	3.6224	0.2228

CODE 9309

ID	NAME	TOTAL	EDUCATION	GOVERNMENT	NON-LIMITED
001	COLUMBIA COUNTY	1.4163		1.2112	0.2051
002	JAIL OPERATIONS - 3 YEAR LEVY	0.5797		0.5797	
010	COLUMBIA 4H & EXTENSION	0.0497		0.0497	
015	COL 9-1-1 COMM DISTR	0.2217		0.2217	
016	COL 911 LO LEVY	0.2900		0.2900	
020	COLUMBIA VECTOR	0.1099		0.1099	
040	RAINIER CEMETERY	0.0500		0.0500	
060	PORT OF ST HELENS	0.0762		0.0762	
111	COLUMBIA SWCD	0.0868		0.0868	
160	RAINIER CITY	7.2807		4.8350	2.4457
169	REDCO SPECIAL LEVY				
300	NW REGIONAL ESD	0.1336	0.1336		
320	RAINIER 13 SCHOOL	5.0273	5.0273		
801	REDCO	1.1516		1.1516	
802	CCDA - COLCO DEV AGENCY	0.1548		0.1548	
		16.6283	5.1609	8.8166	2.6508

2016-17 Tax Rates by Code Area

CODE 9312					
ID	NAME	TOTAL	EDUCATION	GOVERNMENT	NON-LIMITED
001	COLUMBIA COUNTY	1.5389		1.3161	0.2228
002	JAIL OPERATIONS - 3 YEAR LEVY	0.5797		0.5797	
010	COLUMBIA 4H & EXTENSION	0.0539		0.0539	
015	COL 9-1-1 COMM DISTR	0.2409		0.2409	
016	COL 911 LO LEVY	0.2900		0.2900	
020	COLUMBIA VECTOR	0.1195		0.1195	
040	RAINIER CEMETERY	0.0553		0.0553	
060	PORT OF ST HELENS	0.0828		0.0828	
111	COLUMBIA SWCD	0.0943		0.0943	
300	NW REGIONAL ESD	0.1451	0.1451		
320	RAINIER 13 SCHOOL	5.4360	5.4360		
802	CCDA - COLCO DEV AGENCY	0.1548		0.1548	
		8.7912	5.5811	2.9873	0.2228

CODE 9508					
ID	NAME	TOTAL	EDUCATION	GOVERNMENT	NON-LIMITED
001	COLUMBIA COUNTY	1.5389		1.3161	0.2228
002	JAIL OPERATIONS - 3 YEAR LEVY	0.5797		0.5797	
010	COLUMBIA 4H & EXTENSION	0.0539		0.0539	
015	COL 9-1-1 COMM DISTR	0.2409		0.2409	
016	COL 911 LO LEVY	0.2900		0.2900	
020	COLUMBIA VECTOR	0.1195		0.1195	
050	CLATSKANIE PARK & REC	0.2372		0.2372	
055	CLATSKANIE LIBRARY	0.1954		0.1954	
060	PORT OF ST HELENS	0.0828		0.0828	
111	COLUMBIA SWCD	0.0943		0.0943	
300	NW REGIONAL ESD	0.1451	0.1451		
340	CLATSKANIE 6J SCHOOL	3.4766	2.8812		0.5954
802	CCDA - COLCO DEV AGENCY	2.4231		2.4231	
		9.4774	3.0263	5.6329	0.8182

CODE 9510					
ID	NAME	TOTAL	EDUCATION	GOVERNMENT	NON-LIMITED
001	COLUMBIA COUNTY	1.5389		1.3161	0.2228
002	JAIL OPERATIONS - 3 YEAR LEVY	0.5797		0.5797	
010	COLUMBIA 4H & EXTENSION	0.0539		0.0539	
015	COL 9-1-1 COMM DISTR	0.2409		0.2409	
016	COL 911 LO LEVY	0.2900		0.2900	
020	COLUMBIA VECTOR	0.1195		0.1195	
040	RAINIER CEMETERY	0.0553		0.0553	
050	CLATSKANIE PARK & REC	0.2372		0.2372	
055	CLATSKANIE LIBRARY	0.1954		0.1954	
060	PORT OF ST HELENS	0.0828		0.0828	
111	COLUMBIA SWCD	0.0943		0.0943	
300	NW REGIONAL ESD	0.1451	0.1451		
340	CLATSKANIE 6J SCHOOL	3.4766	2.8812		0.5954
802	CCDA - COLCO DEV AGENCY	2.4387		2.4387	
		9.5483	3.0263	5.7038	0.8182

EXPLANATION OF URBAN RENEWAL TAX INCREMENT FINANCING

The Oregon Constitution and Statutes allow cities and counties to establish Urban Renewal Districts for the purpose of improving specific areas, or “Plan Areas”, that contain deteriorated buildings and/or lack adequate infrastructure, or “blight” as it is commonly called. Urban renewal agencies can take on special projects, or “plans”, like improving roads, bringing sewer and water to industrial sites, developing public buildings, such as fire stations, and many other worthwhile activities.

By incurring debt to pay for these improvements, it is expected that property values within the Plan Area will increase due to private investments that would not otherwise occur. The property taxes from this increase in value, called “increment”, is then given to the urban renewal agency to pay off the debt. If there is no increase in assessed value the urban renewal agency does not collect any revenue. Local taxing districts, such as the county, city, fire district, school district and others, continue to receive the property taxes from the assessed value the district had before the urban renewal plan area plan was formed. This value is called the “frozen value”. The increase in the value of the plan area above the frozen value is called “excess value”.

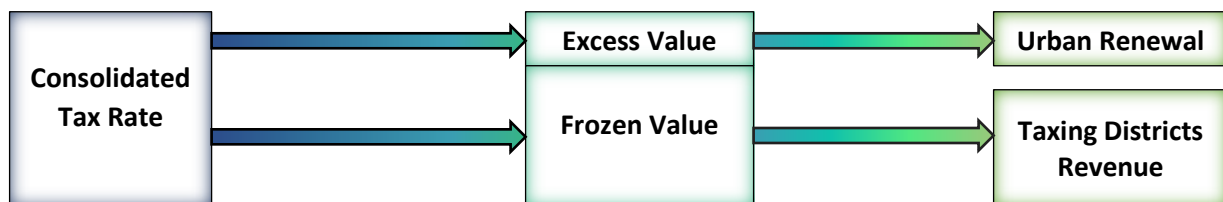
Impact on Property Owners

Even though the assessed value in the plan area is frozen, property owners are still taxed the same way as before. New investment is taxable the same as all other property in the County (unless the property qualifies for exemption or special assessment under other programs). All taxing districts have a fixed tax rate for operating purposes. Those fixed tax rates for taxing districts that reside within the plan area are reduced by the increment necessary for the agency to receive the revenue attributed to the excess value. There is no impact on property owners, either positive or negative. The total tax amount remains the same.

Impact on Taxing Districts

With a rate based property tax system the impact on taxing districts is just the opposite for what it is for property owners. Like the frozen value, a taxing district’s operating property tax revenue from the plan area would be frozen since the rate cannot change. (The district could still realize an increase in property taxes from outside the plan area.) Once the debt is payed off and the Plan Area is dissolved, assessed values increase due to the private investment, and taxing districts receive property taxes from the increased assessed value.

Total Consolidated Tax Rate X Assessed Value in Urban Renewal Area = Tax Revenues



Only the taxing districts that reside within the urban renewal plan area are impacted by urban renewal. However, the impact is spread across the shared property. If the urban renewal district was established by the county, then the entire county is considered to be the shared property.

Once the total revenue for the urban renewal district is known, each district within the area has its operating tax rate reduced by the increment tax rate necessary to collect that revenue. These rates are applied to all properties within each of the affected districts’ boundaries.

2016 Columbia County Urban Renewal Increments and Adjusted Tax Rates

CCDA

Columbia County Development Agency (CCDA)

Port Westward Urban Renewal Plan Area

Urban Renewal Adjusted District Rates for Areas Outside of Rainier (REDCO UR)

	Permanent or Maximum Rate Allowed	CCDA Urban Renewal Increment	Adjusted Rate for Affected Districts
Columbia County	1.3956	0.0795	1.3161
Columbia Co Bonds	0.2362	0.0134	0.2228
Jail Operations Levy*	0.5797	0.0000	0.5797
Columbia 4H & Ext.	0.0571	0.0032	0.0539
Col 9-1-1 Comm Distr	0.2554	0.0145	0.2409
Col 9-1-1 Local Option Levy*	0.2900	0.0000	0.2900
Columbia Vector	0.1279	0.0084	0.1195
Rainier Cemetery	0.0709	0.0156	0.0553
Clatskanie Park & Rec	0.3483	0.1111	0.2372
Clatskanie Library	0.2868	0.0914	0.1954
Port of St. Helens	0.0886	0.0058	0.0828
Clatskanie RFPD	1.7198	0.5715	1.1483
Clatskanie RFPD LO*	1.2533	0.0000	1.2533
NW Regional ESD	0.1538	0.0087	0.1451
Clatskanie 6J School	4.6062	1.7250	2.8812
Clatsk School Bonds	0.9518	0.3564	0.5954
Columbia SWCD	0.1000	0.0057	0.0943
Totals	12.5214	3.0102	9.5112

CCDA & REDCO

Columbia County Development Agency (CCDA) & Rainier Economic Development Council (REDCO)

Port Westward Urban Renewal Plan Area & Rainier Waterfront Plan Area

Urban Renewal Adjusted District Rates for Areas Within the Rainier Area (REDCO UR)

	Permanent or Maximum Rate Allowed	CCDA Urban Renewal Increment	REDCO Urban Renewal Increment	Adjusted Rate for Affected Districts
Columbia County	1.3956	0.0795	0.1049	1.2112
Columbia Co Bonds	0.2362	0.0134	0.0177	0.2051
Jail Operations Levy*	0.5797	0.0000	0.0000	0.5797
Columbia 4H & Ext.	0.0571	0.0032	0.0042	0.0497
Col 9-1-1 Comm Distr	0.2554	0.0145	0.0192	0.2217
Col 9-1-1 Local Option Levy*	0.2900	0.0000	0.0000	0.2900
Columbia Vector	0.1279	0.0084	0.0096	0.1099
Rainier Cemetery	0.0709	0.0156	0.0053	0.0500
REDCO Special Levy	0.0000	0.0000	0.0000	0.0000
Port of St. Helens	0.0886	0.0058	0.0066	0.0762
Rainier City	5.2045	0.0000	0.3695	4.8350
Rainier City Bond	2.6326	0.0000	0.1869	2.4457
Columbia River Fire	2.9731	0.0000	0.2254	2.7477
NW Regional ESD	0.1538	0.0087	0.0115	0.1336
Rainier 13 School	5.4360	0.0000	0.4087	5.0273
Columbia SWCD	0.1000	0.0057	0.0075	0.0868
Totals	19.6014	0.1548	1.377	18.0696

*Local Option Levies are Exempt from the Urban Renewal Increment unless the Agency files a Certificate of Impairment.

For more information on Urban Renewal, see the Department of Revenue's Publication, Urban Renewal, at http://www.oregon.gov/DOR/forms/FormsPubs/urban-renewal-circular_504-623.pdf.

Measure 5 Compression

Tax rates are applied to the tax assessed value when taxes are calculated. Each district's rate is categorized as education, general government or non-limited in order to calculate the Measure 5 tax rate limitations. While Measure 50 created permanent operating rates for taxing districts to be applied to the tax assessed value, Measure 5 tests for the category limits of \$5.00/\$1,000 value for education and \$10/\$1,000 value for general government. The urban renewal increment, which comes from all districts within an urban renewal plan area, is subject to the category limit for which the funds are used and is added into the appropriate category for tax calculation. These consolidated category limits are tested against the real market value or the specially assessed value (often referred to as the M5 Value) of the property to determine if compression is necessary.

Following is an example of how to test for Measure 5 Compression:

Total Real Market (M5) Value = \$120,000 Total Assessed Value (AV) = \$100,000

For tax code area 02-01, the Measure 5 limitations for education and general government would be:

Education: \$120,000 M5 Value x \$5.00/\$1,000 = \$600.00 M5 Tax Limit
Government: \$120,000 M5 Value x \$10.00/\$1,000 = \$1,200.00 M5 Tax Limit

The Measure 50 tax is calculated using the full tax rate and the Assessed Value:

Education: \$100,000 AV x \$5.4563/\$1,000 = \$545.63 M50 Tax
Government: \$100,000 AV x \$8.0368/\$1,000 = \$803.68 M50 Tax

Now compare the two calculations to see if compression is necessary. For both the education and general government tax, the M50 tax is lower than the M5 tax limit, so there is no compression.

Another example of compression using tax code area 02-01:

Total Real Market (M5) Value = \$105,000 Total Assessed Value (AV) = \$100,000

For tax code area 02-01, the Measure 5 limitations for education and general government would be:

Education: \$105,000 M5 Value x \$5.00/\$1,000 = \$525.00 M5 Tax Limit
Government: \$105,000 M5 Value x \$10.00/\$1,000 = \$1,050.00 M5 Tax Limit

The Measure 50 tax is calculated using the full tax rate and the Assessed Value:

Education: \$100,000 AV x \$5.4563/\$1,000 = \$545.63 M50 Tax
Government: \$100,000 AV x \$8.0368/\$1,000 = \$803.68 M50 Tax

The general government category is still below the M5 government category limit, however, the education tax in this case is \$20.63 more than M5 allows, so education taxes are compressed. This means the M50 tax amount for each district within the education category on this tax statement will be reduced proportionately so that the total does not exceed \$525.00. This is done by dividing the M5 Limit by the M50 Tax and apply the resulting ratio to each district in that category. The compressed tax results in tax revenue loss to the district.

\$525.00/\$545.63 = 0.9621904954 M5 Limit Ratio

<u>Education Category District</u>	<u>AV</u>	<u>District Rate</u>	<u>M50 Tax</u>	<u>M5 Limit Ratio</u>	<u>Adj M50 Tax</u>	<u>Loss</u>
NW Regional ESD	\$100,000	x 0.1438	= 14.38	x 0.9621904954	= 13.84	-0.54
St Helens 502 School	\$100,000	x 5.0297	= 502.97	x 0.9621904954	= 483.95	-19.02
<u>Portland Comm College</u>	<u>\$100,000</u>	<u>x 0.2828</u>	<u>= 28.28</u>	<u>x 0.9621904954</u>	<u>= 27.21</u>	<u>-1.07</u>
Total Education Tax:		5.4563	\$545.63		\$525.00	-\$20.63

The non-limited category details bond levies that are not subject to the rate limitations of Measure 5.

Changed Property Ratios

A Changed Property Ratio (CPR) for each property type is calculated annually to calculate the Maximum Assessed Value attributable to the Real Market Value of 'changed' property that is added due to new property, new improvements to property, subdivided or partitioned property, or property that is disqualified from exemption or special assessment.

For each property type countywide, the average maximum assessed value is divided by the average real market value of 'unchanged' properties to determine the ratio, not to exceed 1.00, to be applied to the real market value of 'changed' properties.

Below is a ten year history of Changed Property Ratios:

Property Type	Changed Property Ratios (CPR)									
	2007	2008	2009	2010	2011	2012	2013	2014	2015	2016
City Residential and Watercraft	.597	.592	.717	.755	.949	1.00	.986	.904	.940	.824
Commercial and Small Industrial*	.558	.567	.583	.600	.633	.695	.740	.713	.786	.840
Highest & Best Use Forest	.417	.429	.661	.772	.772	.767	.812	.836	.857	.883
Large Industrial and Machinery & Equipment*	1.00	1.00	1.00	1.00	1.00	1.00	1.00	1.00	1.00	1.00
Multi-Family	.579	.598	.681	.703	.640	.705	.792	.836	.868	.922
Odd Lot	.948	.842	.893	.916	.989	.998	1.00	1.00	1.00	1.00
Personal Manufactured Structures	1.00	1.00	1.00	1.00	1.00	1.00	1.00	.914	.845	.878
Recreational	.809	.787	.786	.818	.873	.842	.850	1.00	1.00	1.00
Rural Tract	.430	.412	.661	.772	.945	.949	.929	1.00	.882	.860

* From 2007 thru 2011, Commercial Property was completely separate from Industrial, and the Small Industrial Property was combined with the Large Industrial for CPR purposes.

Historical Comparison of County Valuation and Total Taxes

Year	Real Property	Manuf. Struct. Property	Personal Property	Utility Property	Total Value	Taxes
2006-07	3,090,168,050	31,747,840	69,745,790	408,879,110	3,600,540,790	45,633,147
2007-08	3,185,200,815	31,815,070	77,149,290	601,213,350	3,895,378,525	51,509,143
2008-09	3,352,798,412	32,135,350	96,648,400	381,418,601	3,863,000,763	51,183,655
2009-10	3,458,935,122	30,725,947	83,873,780	419,956,181	3,993,491,030	54,949,959
2010-11	3,577,628,983	30,363,518	73,687,760	403,593,050	4,085,273,311	56,992,720
2011-12	3,549,577,947	28,178,258	71,979,650	408,630,654	4,058,366,509	54,941,133
2012-13	3,601,892,063	28,099,529	74,361,410	408,758,740	4,113,111,742	55,984,908
2013-14	3,692,215,297	24,406,038	74,958,377	619,720,140	4,411,299,852	60,281,265
2014-15	3,754,796,301	26,526,533	74,220,759	704,399,469	4,559,943,062	64,770,613
2015-16	3,973,171,766	28,452,197	77,403,758	636,662,100	4,715,689,821	66,417,585
2016-17	4,111,802,008	35,521,190	81,162,190	683,273,590	4,911,758,978	70,272,829

2016 Top 20 All Roll Type Taxpayers for Columbia County

OWNER NAME	TAX AMOUNT	ASSESSED VALUE	REAL MARKET VALUE
PORTLAND GEN ELEC CO	4,489,039.35	609,585,000	609,585,000
NORTHWEST NATURAL GAS CO	1,992,807.69	161,152,641	161,153,414
UNITED STATES GYPSUM	985,435.00	58,742,110	58,742,110
DYNO NOBEL INC	823,032.94	62,938,706	62,951,881
LONGVIEW TIMBERLANDS LLC	609,031.39	47,448,186	74,974,114
COLUMBIA RIVER PUD	494,328.03	37,413,500	37,413,500
CLATSKANIE PUD	479,170.12	37,504,000	37,504,000
CASCADE KELLY HOLDINGS LLC	440,181.55	55,645,480	56,036,040
ARMSTRONG WORLD INDUSTRIES INC	416,011.90	27,745,040	27,745,040
COMCAST CORPORATION	292,918.47	19,083,200	20,559,466
CASCADES TISSUE GROUP OREGON	248,308.75	56,822,970	56,822,970
CENTURYLINK	238,392.32	15,971,600	15,971,600
FRED MEYER STORES INC	223,823.26	13,604,630	16,215,490
WEYERHAEUSER COMPANY	180,426.77	13,810,998	21,736,527
FOSS MARITIME COMPANY	153,867.11	8,692,250	8,754,230
NORTHWEST AGGREGATES INC	153,492.83	12,019,140	12,019,140
PORT OF ST HELENS	134,099.64	8,530,296	37,087,289
WAL-MART REAL ESTATE BUSINESS TRUST	128,751.96	8,514,540	8,731,360
CLARUTH INC WILLNA INC FRANBEA INC EA1/3	127,479.87	11,016,236	17,333,743
BASCOM PACIFIC LLC	127,472.69	10,236,493	15,978,243

Columbia County 2016 Tax District Total Values

DIST ID	DISTRICT NAME	RMV TOTAL	M5 TOTAL	EXCEPTION TOTAL	AV TOTAL	TAX ACCT COUNT
001	COLUMBIA COUNTY	7,376,616,652	6,206,696,882	196,128,193	4,911,758,978	28,989
002	JAIL OPERATIONS - 3 YEAR LEVY	7,376,616,652	6,206,696,882	196,128,193	4,911,758,978	28,989
010	COLUMBIA 4H & EXTENSION	7,376,616,652	6,206,696,882	196,128,193	4,911,758,978	28,989
015	COL 9-1-1 COMM DISTR	7,376,616,652	6,206,696,882	196,128,193	4,911,758,978	28,989
016	COL 911 LO LEVY	7,376,616,652	6,206,696,882	196,128,193	4,911,758,978	28,989
020	COLUMBIA VECTOR	6,235,160,308	5,410,649,155	188,289,809	4,260,042,116	23,905
025	GTR ST HELENS PK & REC	2,583,904,271	2,131,835,823	66,934,563	1,713,553,957	9,688
040	RAINIER CEMETERY	1,941,812,552	1,675,210,480	96,295,055	1,266,110,987	7,034
050	CLATSKANIE PARK & REC	1,400,960,876	1,242,483,038	78,540,720	877,493,183	4,202
055	CLATSKANIE LIBRARY	1,400,960,876	1,242,483,038	78,540,720	877,493,183	4,202
060	PORT OF ST HELENS	6,235,160,308	5,410,649,155	188,289,809	4,260,042,116	23,905
100	SCAPPOOSE LIBRARY	1,540,935,663	1,390,856,800	21,978,505	1,109,872,704	6,257
110	CLATSKANIE CITY	144,531,110	140,335,354	3,660,259	123,014,113	920
111	COLUMBIA SWCD	7,328,732,387	6,186,861,699	196,006,627	4,902,367,356	28,932
112	WEST MULTNOMAH SWCD	47,884,265	19,835,183	121,566	9,391,622	57
115	CITY COLUMBIA CITY	215,789,100	214,736,926	4,140,697	178,778,071	932
150	PRESCOTT CITY	6,011,211	5,951,101	11,012	5,401,859	76
160	RAINIER CITY	243,986,683	240,838,187	10,801,457	209,251,906	1,316
169	REDCO SPECIAL LEVY	262,621,723	257,892,253	14,616,339	224,061,956	1,360
170	SCAPPOOSE CITY	726,324,336	721,730,598	13,683,551	581,623,133	2,877
175	ST HELENS CITY	1,153,137,289	1,144,589,511	29,305,963	906,234,062	5,291
190	VERNONIA CITY	153,309,140	151,831,800	1,921,993	123,126,911	1,338
220	CLATSKANIE RFPD	1,373,395,255	1,210,007,309	77,634,946	842,329,840	4,156
221	CLATSKANIE RFPD LO LEVY	1,373,395,255	1,210,007,309	77,634,946	842,329,840	4,156
240	MIST-BIRKENFELD JT RFPD	250,086,121	193,119,940	2,173,004	160,979,404	798
260	SAUVIE ISLAND RFPD # 30	47,884,265	19,835,183	121,566	9,391,622	57
261	SAUVIE ISLAND RFPD #30 LO	47,884,265	19,835,183	121,566	9,391,622	57
270	SCAPPOOSE JT RFPD	1,527,315,371	1,377,236,508	21,891,473	1,096,253,659	6,206
275	COLUMBIA RIVER FIRE	3,283,216,124	2,815,041,442	88,235,857	2,312,290,525	13,949
290	VERNONIA RFPD	348,127,201	285,411,518	3,187,065	230,363,695	2,318
291	VERNONIA RFPD LO LEVY	348,127,201	285,411,518	3,187,065	230,363,695	2,318
300	NW REGIONAL ESD	7,376,616,652	6,206,696,882	196,128,193	4,911,758,978	28,989
310	ST HELENS 502 SCHOOL	2,585,448,099	2,133,379,651	66,978,728	1,714,856,247	9,732
320	RAINIER 13 SCHOOL	958,232,277	768,633,204	22,782,073	670,219,059	5,260
330	SCAPPOOSE 1 JT SCHOOL	1,853,085,804	1,619,365,318	24,719,453	1,296,699,195	7,290
340	CLATSKANIE 6J SCHOOL	1,231,179,578	1,098,334,816	76,038,871	747,419,601	3,243
350	VERNONIA 47 JT SCHOOL	748,670,894	586,983,893	5,609,068	482,564,876	3,464
390	PORTLAND COMM COLLEGE	5,182,914,607	4,337,907,314	97,531,920	3,493,194,817	20,478
391	PORTLAND COMM COLLEGE	5,182,914,607	4,337,907,314	97,531,920	3,493,194,817	20,478
801	REDCO	262,621,723	257,892,253	14,616,339	224,061,956	1,360
802	CCDA - COLCO DEV AGENCY	7,376,616,652	6,206,696,882	196,128,193	4,911,758,978	28,989

Columbia County 2016-17 District Tax Rates and Total Taxes

ID	NAME	PERM RATE	LOC OPT RATE	OPERATING TAXES	BOND RATE	BOND TAXES	ADD'L TAXES	TOTAL TAXES
001	COLUMBIA COUNTY	1.3956	0.0000	6,405,085.96	0.2362	1,090,373.19	73,710.64	7,569,169.79
002	JAIL OPERATIONS - 3 YR LEVY	0.0000	0.5797	2,699,117.31	0.0000	0.00	8,233.05	2,707,350.36
010	COLUMBIA 4H & EXTENSION	0.0571	0.0000	262,338.43	0.0000	0.00	810.94	263,149.37
015	COL 9-1-1 COMM DISTR	0.2554	0.0000	1,172,391.26	0.0000	0.00	3,627.25	1,176,018.51
016	COL 911 LO LEVY	0.0000	0.2900	1,350,261.49	0.0000	0.00	4,118.67	1,354,380.16
020	COLUMBIA VECTOR	0.1279	0.0000	503,677.31	0.0000	0.00	1,664.38	505,341.69
025	GTR ST HELENS PK & REC	0.2347	0.0000	402,170.91	0.0000	0.00	1,169.57	403,340.48
040	RAINIER CEMETERY	0.0709	0.0000	67,335.63	0.0000	0.00	154.89	67,490.52
050	CLATSKANIE PARK & REC	0.3483	0.0000	203,949.81	0.0000	0.00	353.57	204,303.38
055	CLATSKANIE LIBRARY	0.2868	0.0000	168,009.47	0.0000	0.00	291.16	168,300.63
060	PORT OF ST HELENS	0.0886	0.0000	349,000.75	0.0000	0.00	1,153.00	350,153.75
100	SCAPPOOSE LIBRARY	0.2536	0.0000	281,464.26	0.0000	0.00	1,413.30	282,877.56
110	CLATSKANIE CITY	6.2088	0.0000	654,069.23	0.0000	0.00	2,085.29	656,154.52
111	COLUMBIA SWCD	0.1000	0.0000	458,051.09	0.0000	0.00	1,420.24	459,471.33
112	WEST MULTNOMAH SWCD	0.0750	0.0000	704.41	0.0000	0.00	0.00	704.41
115	CITY COLUMBIA CITY	1.1346	0.6700	322,623.18	0.0000	0.00	1,727.34	324,350.52
150	PRESCOTT CITY	0.3086	2.1500	13,281.06	0.0000	0.00	0.00	13,281.06
160	RAINIER CITY	5.2045	0.0000	961,803.44	2.6326	511,767.15	0.00	1,473,570.59
169	REDCO SPECIAL LEVY	0.0000	0.0000	0.00	0.0000	0.00	0.00	0.00
170	SCAPPOOSE CITY	3.2268	0.0000	1,876,781.56	0.0757	44,029.13	14,387.04	1,935,197.73
175	ST HELENS CITY	1.9078	0.0000	1,728,913.21	0.0000	0.00	324.64	1,729,237.85
190	VERNONIA CITY	5.8163	0.0000	716,125.00	0.0000	0.00	3,256.11	719,381.11
220	CLATSKANIE RFPD	1.7198	0.0000	947,019.12	0.0000	0.00	1,745.85	948,764.97
221	CLATSKANIE RFPD LO LEVY	0.0000	1.2533	915,957.73	0.0000	0.00	1,272.30	917,230.03
240	MIST-BIRKENFELD JT RFPD	2.0875	0.0000	336,044.04	0.0000	0.00	0.00	336,044.04
260	SAUVIE ISLAND RFPD # 30	0.7894	0.0000	7,413.79	0.0000	0.00	0.00	7,413.79
261	SAUVIE ISLAND RFPD LO	0.0000	0.3500	3,287.10	0.0000	0.00	0.00	3,287.10
270	SCAPPOOSE JT RFPD	1.1145	0.9400	2,252,246.91	0.0000	0.00	11,449.71	2,263,696.62
275	COLUMBIA RIVER FIRE	2.9731	0.0000	6,796,233.22	0.0000	0.00	20,043.73	6,816,276.95
290	VERNONIA RFPD	0.9535	0.0000	219,648.16	0.0000	0.00	636.31	220,284.47
291	VERNONIA RFPD LO LEVY	0.0000	0.3200	73,677.57	0.0000	0.00	213.55	73,891.12
300	NW REGIONAL ESD	0.1538	0.0000	694,364.13	0.0000	0.00	2,184.31	696,548.44
310	ST HELENS 502 SCHOOL	5.0297	0.0000	8,416,224.14	1.3436	2,304,080.64	31,759.46	10,752,064.24
320	RAINIER 13 SCHOOL	5.4360	0.0000	3,386,649.87	0.0000	0.00	9,825.63	3,396,475.50
330	SCAPPOOSE 1 JT SCHOOL	4.9725	0.0000	6,351,991.02	1.9277	2,499,645.59	42,379.02	8,894,015.63
340	CLATSKANIE 6J SCHOOL	4.6062	0.0000	2,153,465.44	0.9518	445,013.52	3,348.55	2,601,827.51
350	VERNONIA 47 JT SCHOOL	5.0121	0.0000	2,331,575.27	1.6983	819,539.80	4,478.15	3,155,593.22
390	PORTLAND COMM COLLEGE	0.2828	0.0000	965,716.18	0.0000	0.00	3,334.87	969,051.05
391	PORTLAND COMM COLLEGE	0.0000	0.0000	0.00	0.3957	1,382,258.08	4,666.19	1,386,924.27

Columbia County Assessor's Office

Sue Martin Assessor	Enterprise Zone; Urban Renewal; Utilities; Appeals; Measure 50	503-397-2240 *8309 Sue.Martin@co.columbia.or.us
Nancy Sullivan Deputy Assessor	District Levies; Tax Roll Prep; Office Manager; Appraisal	503-397-2240 *8415 Nancy.Sullivan@co.columbia.or.us
Robin Gallo GIS Programmer	GIS; Mapping; Annexations; Data Development	503-397-2240 *8422 Robin.Gallo@co.columbia.or.us
Joelle Leach Programs Analyst	Sales Data; Ratio Study; Database Development; Appraisal	503-397-2240 *8450 Joelle.Leach@co.columbia.or.us
Andrea Jurkiewicz Property Appraiser II	Residential Appraisal; Commercial Appraisal	503-397-2240 *8413 Andrea.Jurkiewicz@co.columbia.or.us
David Leader Property Appraiser II	Residential Appraisal; Industrial Appraisal	503-397-2240 *8414 David.Leader@co.columbia.or.us
Tina Burell Property Appraiser II	Residential Appraisal; Floating Property Appraisal	503-397-2240 *8417 Tina.Burell@co.columbia.or.us
Marie Lager Property Appraiser II	Residential Appraisal; Farm/Forest Specialist	503-397-2240 *8427 Marie.Lager@co.columbia.or.us
Melinda Gartman Property Appraiser I	Residential Appraisal	503-397-2240 *8430 Melinda.Gartman@co.columbia.or.us
Wendy Vitale Property Appraiser I	Residential Appraisal	503-397-2240 *8412 Wendy.Vitale@co.columbia.or.us
Becky Magnuson Assessment Clerk III	Personal Property; Real Property Ownership Changes; Exemptions	503-397-2240 *8421 Rebekah.Magnuson@co.columbia.or.us
Sheri Jauron Assessment Clerk I	Public Service; Manufactured Structures; Appraisal Support	503-397-2240 *8416 Sheri.Jauron@co.columbia.or.us
Carmel Loncosky Assessment Clerk I	Public Service; Manufactured Structures; Appraisal Support	503-397-2240 *8420 Carmel.Loncosky@co.columbia.or.us

Columbia County Tax Office 503-397-0060
Columbia County Clerk 503-397-3796
Columbia County Land Development Svcs 503-397-1501

